

DRAWING FASHION & STYLE

A step-by-step guide to drawing
clothes, shoes and accessories



HILARY LOVELL

DRAWING FASHION & STYLE

A step-by-step guide to drawing
clothes, shoes, and accessories



ARTISTBY



ARCTURUS

This edition published in 2013 by Arcturus Publishing Limited
26/27 Bickels Yard, 151–153 Bermondsey Street,
London SE1 3HA

Copyright © 2012 Arcturus Publishing Limited

All rights reserved. No part of this publication may be reproduced, stored in a retrieval system, or transmitted, in any form or by any means, electronic, mechanical, photocopying, recording or otherwise, without prior written permission in accordance with the provisions of the Copyright Act 1956 (as amended). Any person or persons who do any unauthorised act in relation to this publication may be liable to criminal prosecution and civil claims for damages.

eISBN: 978-1-78404-334-6

CH002174US

Supplier 28, Date 0813, Print run 2916

Written and illustrated by Hilary Lovell

Designed by Dynamo Limited

Edited by Anna Brett

CONTENTS

INTRODUCTION

DRAWING TOOLS

DRAWING TIPS

INKING TIPS

COLORING TIPS

DRAWING PATTERNS AND PRINTS

PRETTY ROMANTIC

Lace Coat and Skirt

Floral Puffball Dress

Pleated Maxi Skirt

Style Cards

ANIMAL PRINTS

Zebra Peplum Dress

Leopard-print Kaftan

Mixed Animal Prints

Style Cards

BOLD AND BRIGHT

Stylish Color Blocking

Neon Green Skirt

Statement Skinnies
Style Cards

VINTAGE CHIC

1920s Flapper Dress
1950s Polka Dot Dress
1960s Mini Dress
Style Cards

SPORTS LUXE

Nautical Romper
Tennis Dress
Gym Glam
Style Cards

DESIGN ICONS

Diane von Furstenberg
Yves Saint Laurent
Alexander McQueen
Style Cards



INTRODUCTION

Have you ever wondered how designers come up with new looks each season or fancied trying to design a collection of your own? This book is designed to help you do just that. Fashion designer Hilary Lovell breaks down styles from both the catwalk and design icons into clear, easy-to-follow steps.

Before you begin creating your collection, make sure you read the useful hints and tips in the opening section and the style cards at the end of each section. They will give you all the help you need to craft your own couture, including the best use of accessories and fabric.

It's everything a future stylist needs to get going!

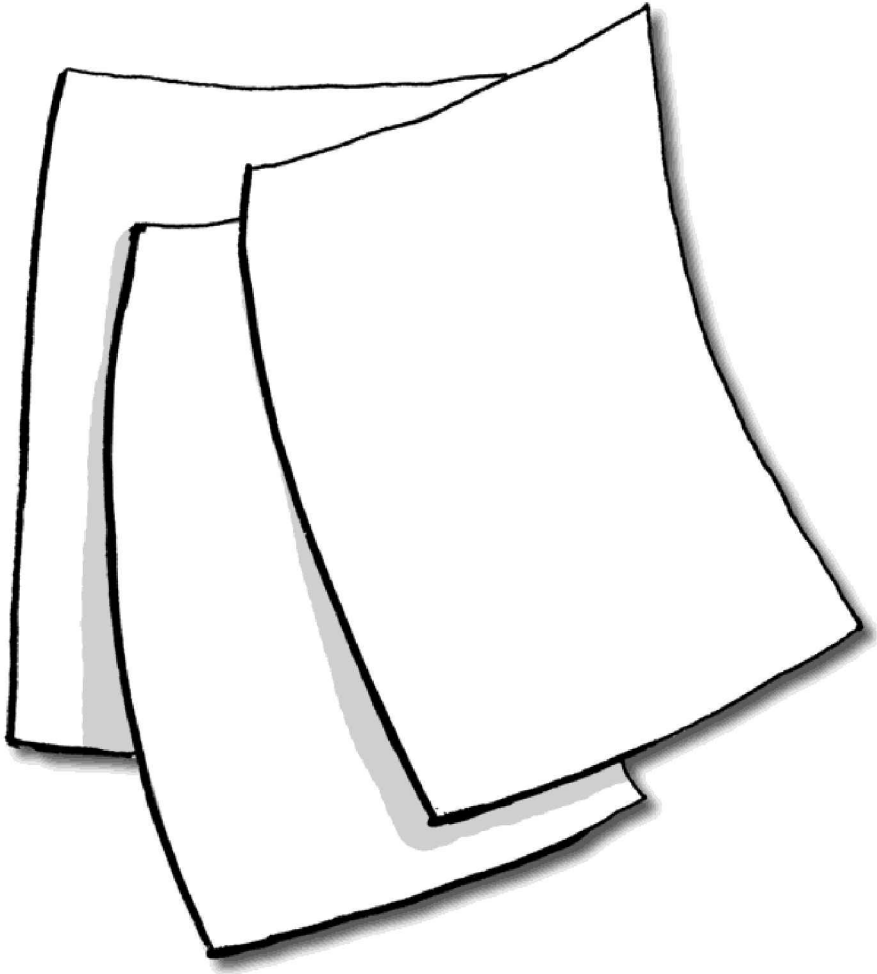


DRAWING TOOLS

Let's start by looking at the tools you'll need to create your fashion designs. It's a good idea to invest in the essentials, then build up your collection of drawing tools over time.

LAYOUT PAPER

There are so many different types of paper that it can seem difficult to know which is best for your drawings. It's a good idea to start with a basic, inexpensive paper such as layout paper while you experiment with the different features of your characters. When you have something you are happy with, you can move on to a heavier, higher-quality paper for your final version.



WATERCOLOR PAPER

This type of paper is useful if you plan to color your finished drawings using waterbased paints. It is made from 100 percent cotton and comes in a variety of

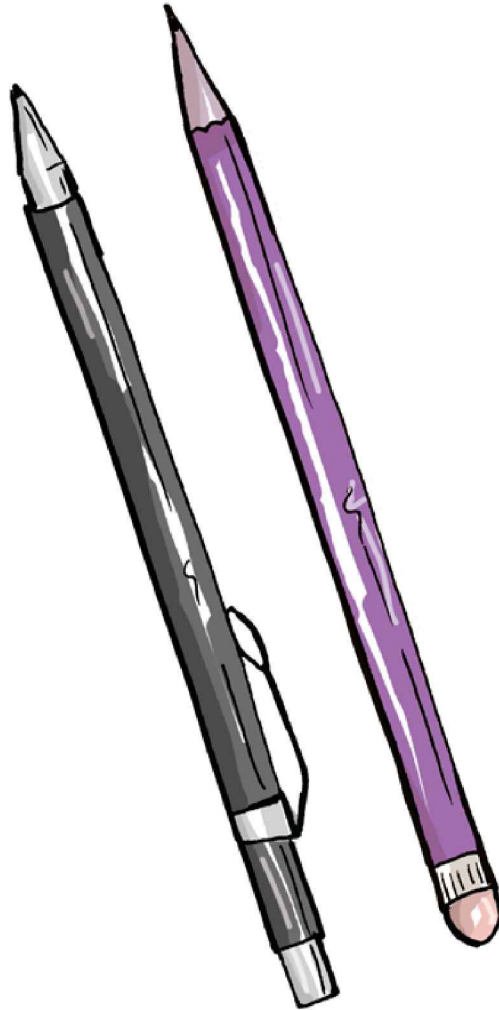
weights and textures—300 gsm (grams per square meter) or above is best.

CARTRIDGE PAPER

This top-quality paper is most frequently used for illustration and drawing, and is ideal for your final version. You don't need to buy the most expensive brand to get great results.

PENCILS

Most of your work will be done in pencil, so it's a good idea to make sure you are comfortable with the type of pencil you choose. Graphite, or lead, pencils come in different grades—hard lead pencils range from #2 1/2 to #4 and soft led pencils are often #1 or #2. Hard lead pencils are good to start with, as they leave clean lines and few smudges. From here you can experiment with slightly blacker, or harder, pencils until you find one you are happy with. A lead holder pencil, or technical pencil, is useful because you can draw thinner lines with this, and the lead breaks less often than with a traditional pencil.



ERASER

Erasers come in three types: rubber, plastic, and putty. All three can be effective, but most people start with

rubber erasers.

PENS

There are certain things to consider when choosing your ink pen. The most important of these is how you plan to color your art. If you intend to use water-based paints, then you need a waterproof ink pen.

The nib thickness of most pens is marked on the lid, and usually ranges from 01 to 05. Nib thicknesses 02 or 03 are usually the best to work with. 01 is very fine, and best suited for inking tiny details on your model's outfit or face.



BRUSHES

Another way to ink your work is with a fine brush. This technique is quite difficult to master as it requires a very steady hand, and a good-quality sable brush. Brushes are great for adding glitter or sparkle details.



PAINTS

Most art stores stock a variety of paints including:

acrylics, watercolors, oils, and gouache. If you want to color your characters by hand, it is best to experiment with different paints until you find one you are comfortable with.



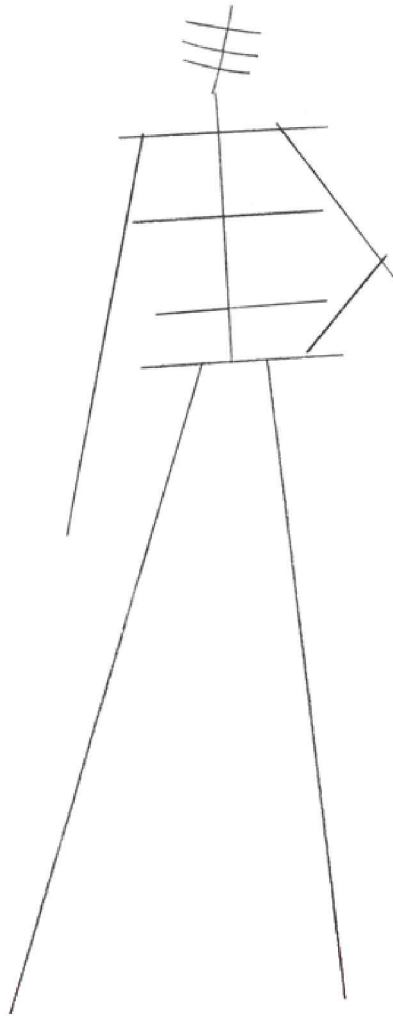
COMPUTER

Another option is to scan your inked illustrations and then color them digitally. Software programs that let you create layers are useful for building depth into your illustrations.

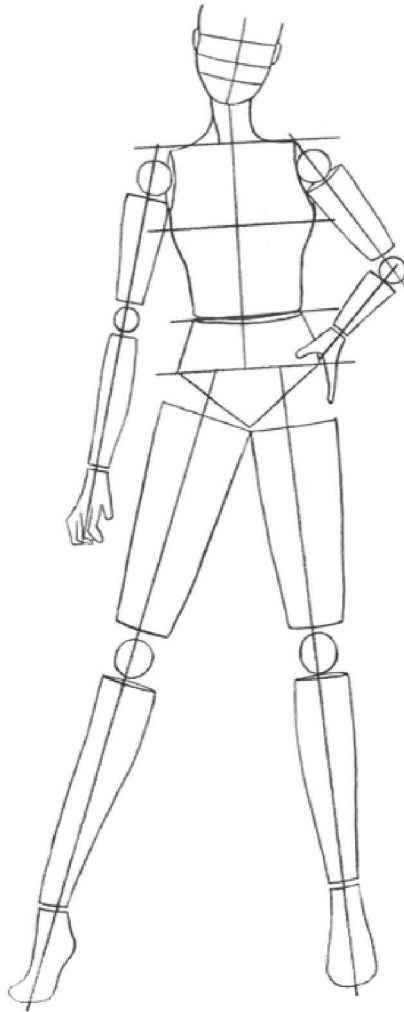
DRAWING TIPS

How to create your model

For fashion illustrations, it's useful to learn the basics of drawing the human form. Flicking through a fashion magazine or just looking in the mirror will give you an idea of the body's structure.



1 Start by drawing the basic frame of the body and the position for the facial features.



2 Build up your frame by using basic shapes such as cylinders for the arms and legs. Use balls for the shoulder, elbow, and knee joints, and a simple body shape for the torso.

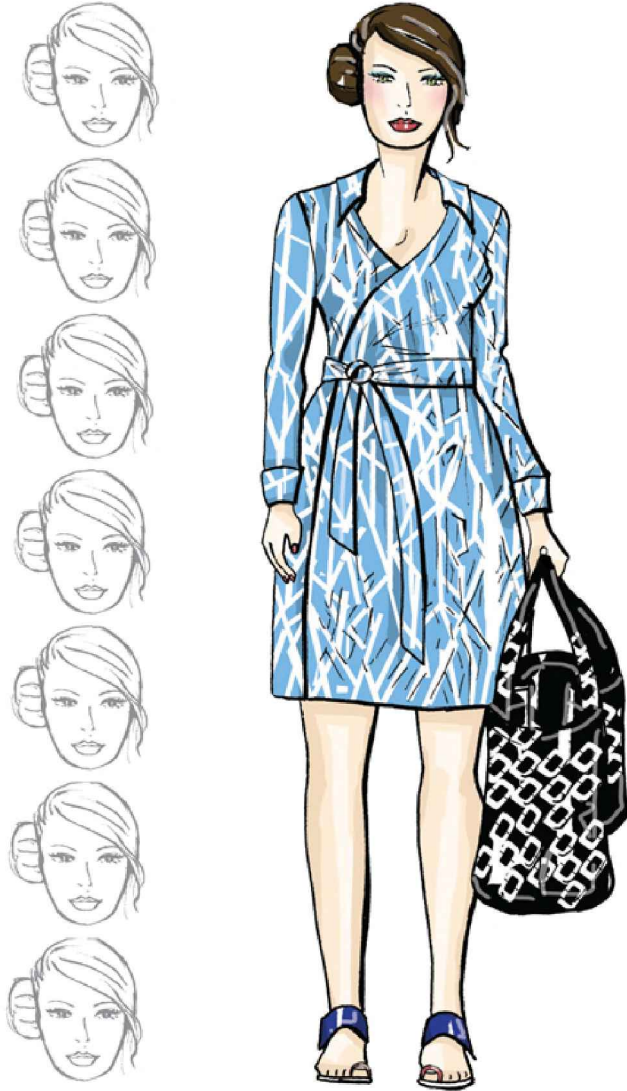


3 When you are happy with your pencil drawing, it's time to bring your model to life by adding fine details, followed by ink and final color.

Elongating your model

One of the secrets of fashion drawing is knowing how to elongate your model. With longer legs, arms, and neck, the model looks elegant and shows off the clothes to their best advantage.

STANDARD BODY



Standard body is the same height as 7 heads.

ELONGATED MODEL

Elongate the neck, torso, arms, and legs.



Elongated model pose is the same height as 8 heads.

INKING TIPS

Don't worry if your pencil drawings are a bit messy and smudged to start with—sketching and building your figure can involve a lot of corrections! When your model is complete and you are happy with the drawing, it's time to start inking.



**ORIOINAL
PENCIL**

VERSION



KEY TIP:

Inking allows you to choose the best lines you have put down and make them stand out from the rest.



FINAL
INK

VERSION



KEY TIP:

Areas with lots of pencil shading become solid black when inked. These include the areas under the collars, around buttons, and under the belt.

COLORING TIPS

After the inking stage, it's time to color your model. Start by applying your base tones, then build up the color by layering other shades on top. Experiment with pens, pencils, and paints until you achieve the desired result.



1 Start by deciding on your color scheme, then lay down your basic tones.



2 Next, using darker tones of the base colors, add the shaded areas to your model.



3 Finally, add highlights to the areas where light would reflect, using whites and lighter shades of the base colors. Highlights to eyeshadow and lipstick give the makeup a glossy finish.

DRAWING PATTERNS AND PRINTS

Creating a three-dimensional appearance on paper can be quite difficult. Here we give you some tips to make your paper take on the texture of soft flowers, shiny sequins, animal print, and distinct designer fabrics.



FLORAL PRINTS:

The best way to create a floral print for your outfit is to start off by putting in your base color. Over the top of the base, add rounded patches of your next color choice. Then, add smaller patches of color for your flowers, placing them evenly over the print to create a floral effect.



SHINY PRINTS:

To give a garment a shiny print, start by coloring up your garment to your chosen look. Over the top of this, add white highlights in clusters where you would imagine the light would catch the fabric. For instance on the shoulders, hip area, and skirt.



ANIMAL PRINTS:

To create mixed animal print, add your base colors first then work up the print over the top. Use shading on the base color where required, to give more shape to the outfit. When using multiple prints in your design, apply the boldest print to what you want to be the main feature. Use smaller prints on the other items to complement the feature garment.



ABSTRACT PRINTS:

To create an abstract fabric print, begin by working up your base color using shading around the body to give the garment shape. Next, work over the top of the base color. If the print is white it is a good idea to leave a few large highlights on your base color, which will work to soften a busy print.

PRETTY ROMANTIC

The modern princess can feel extra dreamy in lovely lace, floral fabrics, and pretty pastels. Go all soft and sweet and create your own fashion fairy tale.

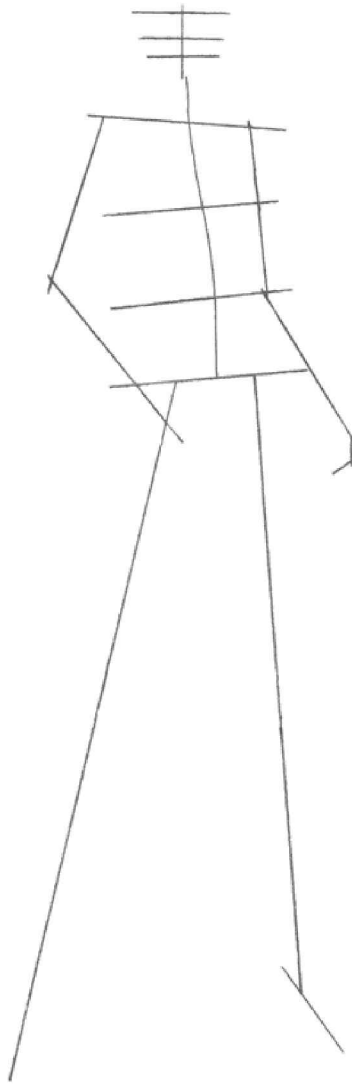


Lace Coat and Skirt

This is a modern, classy way to use lace in a gorgeous day outfit. It looks great with strappy sandals and is brought bang up to date with dip-dye

hair.





1 Create your pose with your frame, using clear lines to map out the figure.



2 Fill out the frame by drawing the body shape, using cylinders and balls for the limbs and joints.



3 Start drawing the outfit in over the top of your body shape. Flare out the coat so that you can see more of it to help show off the lace detail. Add the strappy sandals at this point too.



4 Remove the frame lines and draw in the hairstyle and facial features. Add buttons to the coat and shirt, and the belt and cuff details to the tailored coat.



5 Softly draw the lace detail on the jacket and the skirt. Light, curled lines, randomly spaced, will give the appearance of vintage lace. Add the ruffles to the front of the shirt.



Add an Accessory

Draw a simple purse with a soft, stitched detail on the front. A feature ring works well on the hand holding the purse.



6 Now add the ink to your finished drawing. Use a thicker line around the purse, under the skirt, and around the coat belt and buttons to make them stand out. Give the lace detail thin and thick lines to emphasize the fabric on the coat and skirt.



Stylist's tip

For the lace detail use a very quick squiggle with your pencil/ink. That way it looks a lot more freehand which is how fashion drawing should be.



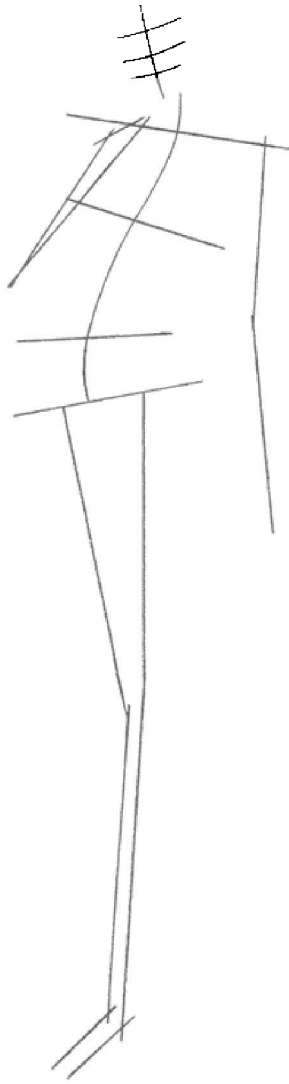
7 Soft pink with lilac accessories works well with this outfit. Top the clothing off with a bright pink dip-dye on light blond hair to make it really stand out against the coat.

Floral Puffball Dress

This beautiful floral puffball dress is perfect for a first date or just a walk on a balmy night. It looks great accessorized with a ruffle clutch and love-heart kitten heels.

TRENDY EVENING





1 Start by drawing the frame of your model. To emphasize the body shape use a strong curve going up into the tilt of the head.



2 Work up the structure of the body, using cylinder shapes for the limbs and torso, and balls for the joints.



3 Draw in the lines of the outfit. The sweetheart neckline of the dress is emphasized by the gathered lines which sweep across the body. Puff out the skirt nice and big following the angle of the body. Add the heels with the love-heart detail.



4 Remove the frame lines and add a soft Afro hairstyle and facial features. Keeping the hair short makes a feature of the neckline of the dress.



5 Add squiggly lines all over the dress for the floral print. Remember the round petal shapes should be evenly spread over your outfit.



Add an Accessory

Very few accessories are required for this chic outfit. A ruffle clutch gives the outfit simple softness and the addition of a fabric flower at the waist draws the eye to the dress.



6 Now it is time to add your ink. Keep the thick lines for under the skirt and under the purse. Draw fast curved lines around the shape of the body and the skirt for the gathers. Give the flower thicker lines to really make it a feature.



Stylist's tip

Placing the right hand on the shoulder gives the pose a romantic feel which works well with this dress.

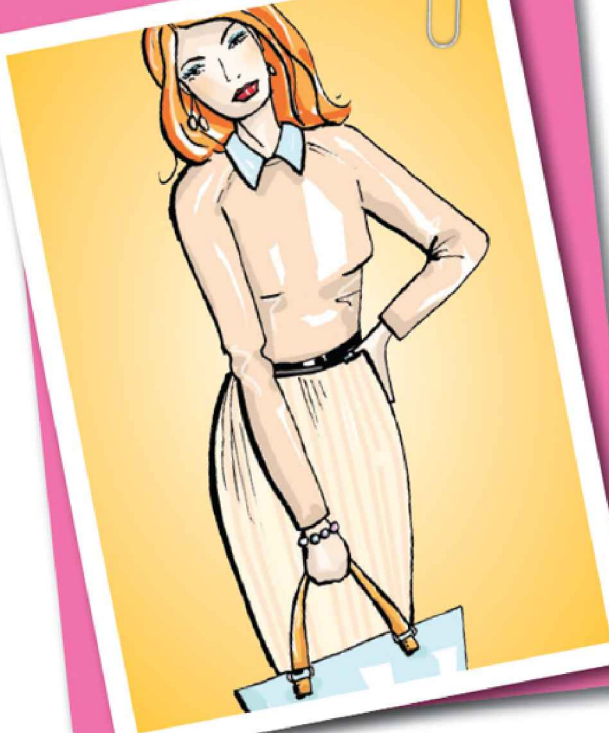


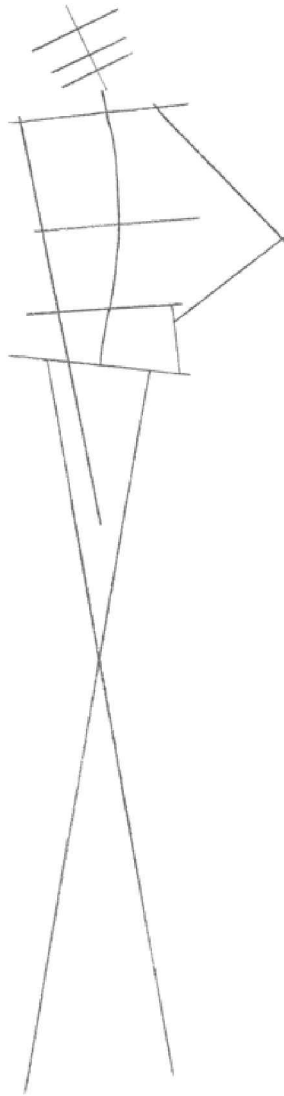
7 Yellow, peach, white, and blue floral print really works well for this dress. Against the model's dark skin the dress has ultimate impact. It is enhanced by peach accessories and makeup.

Pleated Maxi Skirt

This pretty outfit is long and chic with soft colors and details. The floor length skirt is perfect for the day and will definitely turn heads.

STYLISH CASUAL





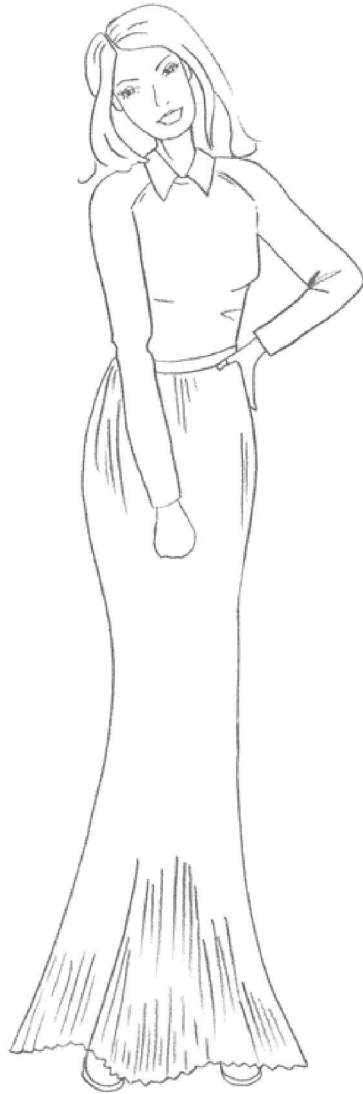
1 Start by drawing your frame for this relaxed pose with a curved body and tilted head.



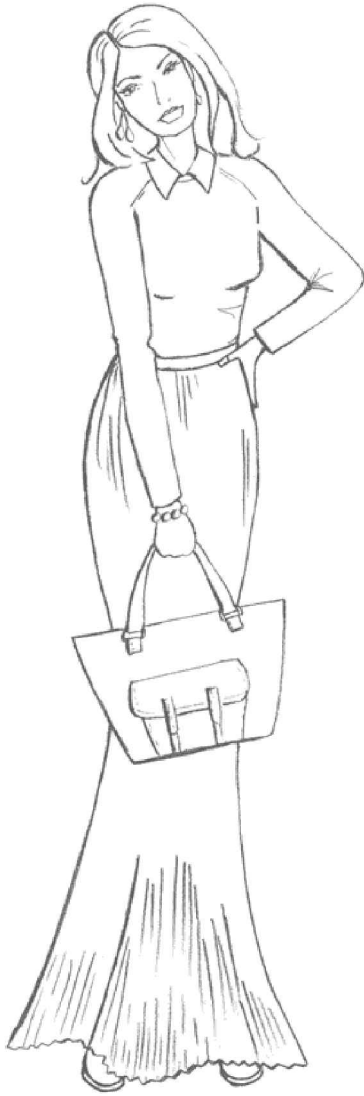
2 Draw in the cylinder shapes and balls for the joints to fill out the figure.



3 Now draw in the outfit, giving the skirt a simple silhouette from the hips and flaring it out at the ankles. Add the detail to the pleating and give the skirt a zigzag hem.



4 Draw in the facial features and the hair. Keep the hairstyle soft and flowing. Follow the tilt of the head for the waves in the hair.

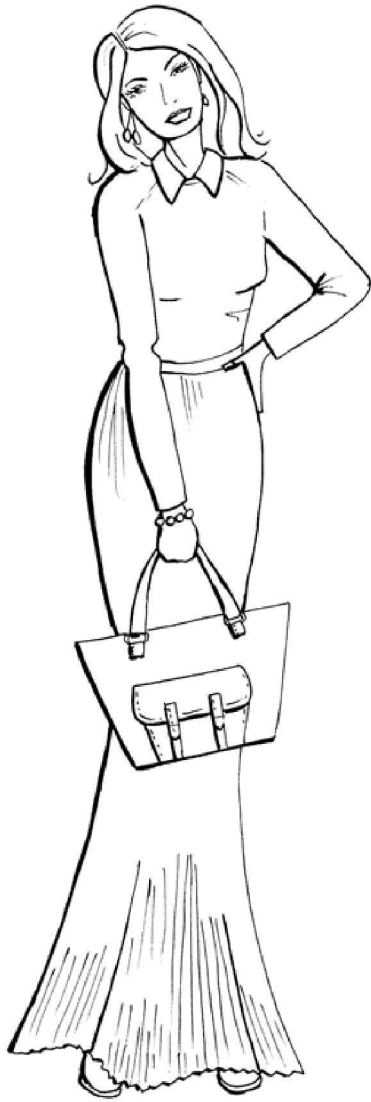


5 Make sure the pleat lines follow the shape of the skirt down the body. The hand held in front of the waist helps draw attention to the lines on the skirt.



Add an Accessory

For this outfit, we've chosen a pretty day purse with strap detail, a simple beaded bracelet, and soft feather earrings. Having the head tilted keeps the earrings from being hidden by the hair, making them a feature.

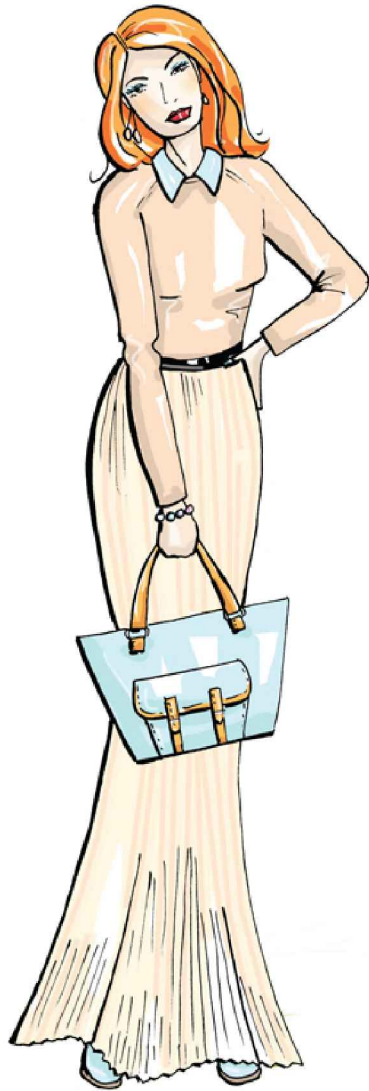


6 To work up your ink, use the thicker lines around the outside of the body, under the purse, around the collar, and within the hair. The pleats on the skirt need to remain thin and soft.



Stylist's tip

Practice poses in the mirror to really see how the body shape works under the model's clothing so you get the perfect silhouette.



7 A pastel palette works well with this lovely soft, daytime outfit. The pink, peach, and blue, with matching shoes and accessories, are enhanced by the black belt and the red hair of the model.

STYLE CARDS

For a pretty, romantic style the accessories need to have a gentle, delicate feel. Simple styles with an added feature of ruffles, lace, or florals work well in soft pastel colors, dusty pinks, and mauves.



This pretty ring with a bird detail has a really romantic feel.



Tear-drop style earrings are delicate and pretty.



Get the look with wonderful lace patterned nail transfers.



Finish off an outfit with pearls and beaded earrings.

HAIR:

Whether sweeping the hair away from the face or leaving it loose, romantic hairstyles are enhanced with a pretty accessory or a simple hair band.



A large soft flower accessory placed to one side will complement an outfit with a similar color.



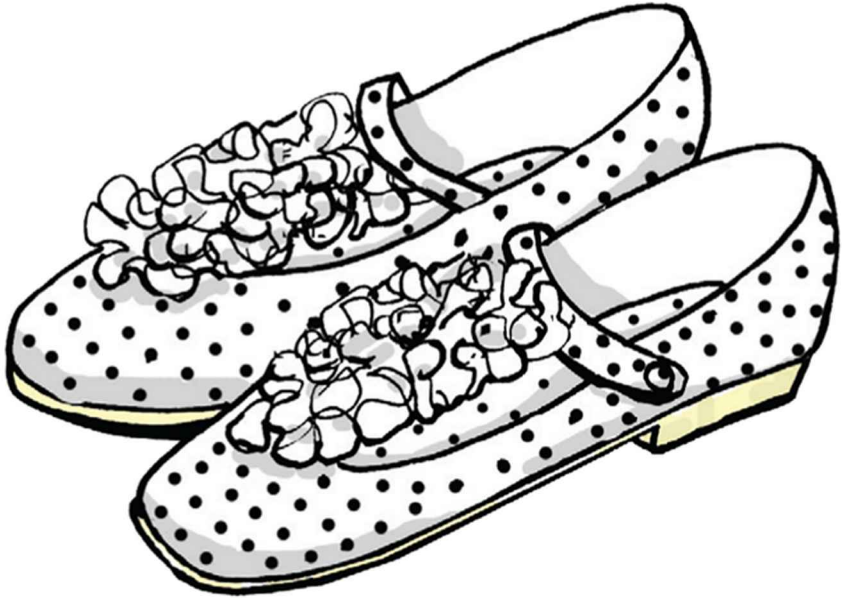
A top braid can look simple and stylish. Leave some strands loose for a relaxed feel.



For a really special romantic look this delicate flower hair band is perfect. This will work best with long, wavy hair.

SHOES:

Getting the romantic look for evening or daytime is no problem with these shoe styles, both enhanced by ruffle features.



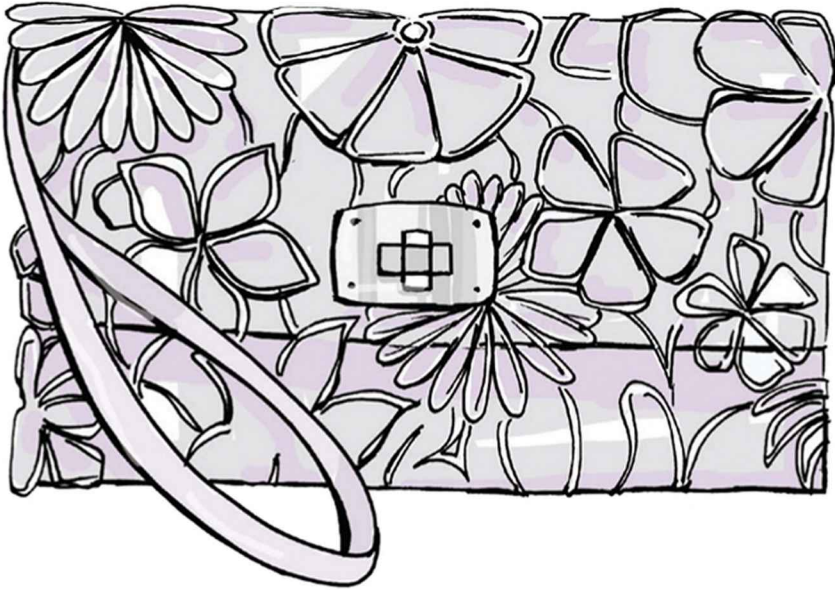
Flat polka dot shoes with a ruffle trim add character.



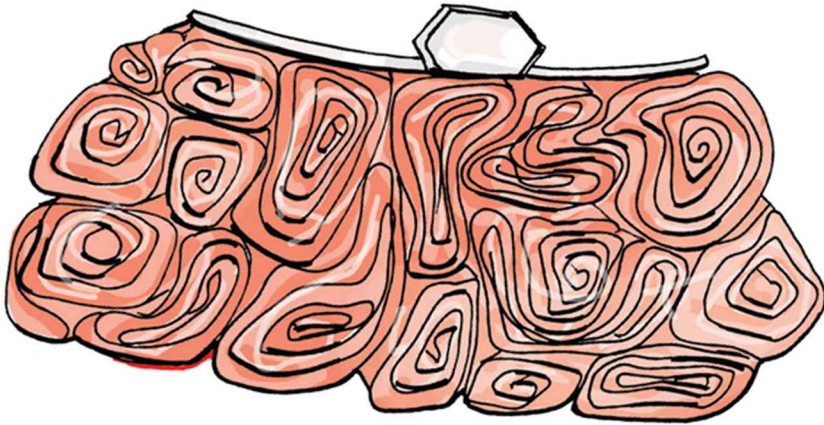
Perfect for the evening, these beautiful satin shoes are totally elegant.

PURSES:

Clutches are perfect to show off the intricate patterns of ruffles or lace.



This lace clutch will give any outfit a touch of femininity.



The ruffles on this clutch can look like flowers... a perfect addition to a floral dress.

ANIMAL PRINTS

For a hot summer look, take inspiration from the sun-drenched African plains. From zebra to leopard, animal prints will always be as natural as their muses.

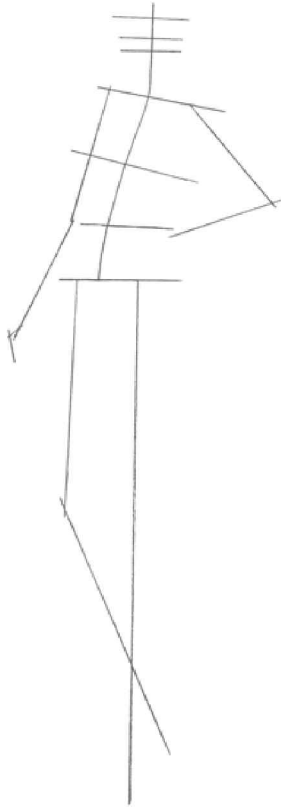


Zebra Peplum Dress

You cannot help being noticed in this zebra print

dress. Bold, strong, and exotic, this look is complete with the addition of daring black and white striped shoes and clutch.





1 Create your frame with straight lines, using a soft curve through the center of the body.



2 Add the shape of the body using the basic cylinder and ball shapes on the frame.



3 Create the outfit using clean lines. A ruffle peplum is added to the waist to give the dress an exciting shape. Very high-heeled shoes give the model an elegance that works well with the pose.



4 Add the features to the face and work up the hairstyle. A side ponytail with wild curls works well with the smooth side parting. The ruffle peplum is also enhanced by the curls.



5 The zebra print detail is added to the dress in strong, dashed lines, all horizontal to get the best effect.



Add an Accessory

Add a striped clutch and matching stripes on the shoes. Very little jewelry is required for this outfit due to the fabric print, so a simple pair of hoop earrings is enough.



6 Start inking your pencil. Use thick lines which run thinner or disappear completely for the stripes on both the dress and accessories. Use the thicker lines under the ruffled skirt to make it really stand out against the print.



7 Now for the color—pure black and white for the model to really make a statement. The hair is dark and the makeup is subtle so the dress says it all.



Stylist's tip

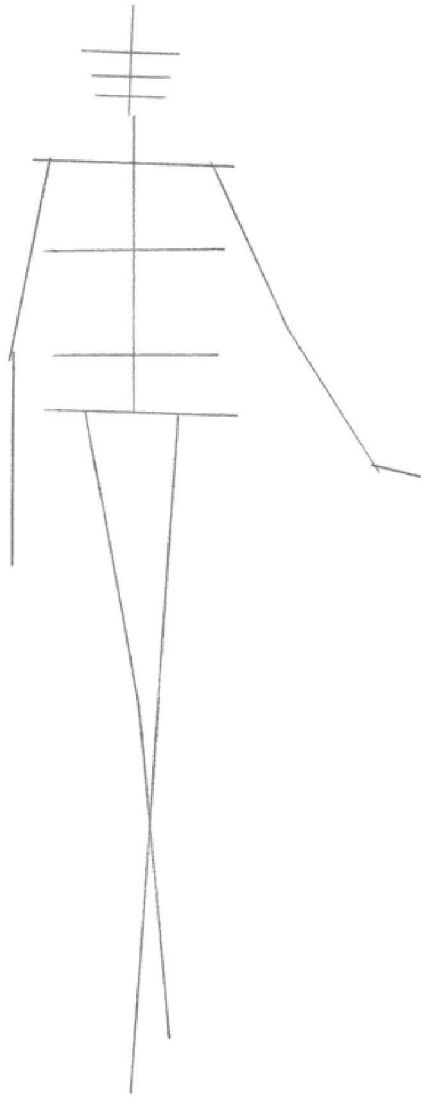
Adding a gray on the zebra print dress softens the contrast of the black and white and gives the dress shape.

Leopard-print Kaftan

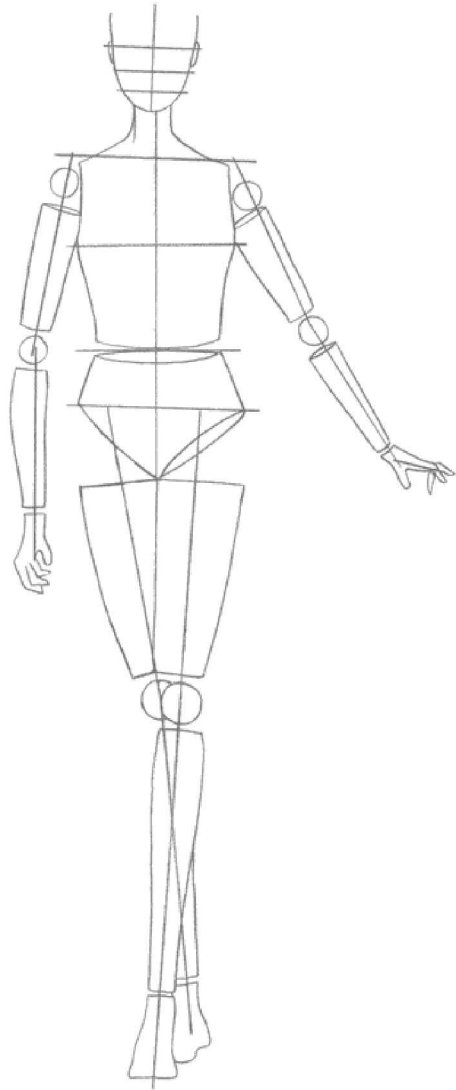
For the ultimate glamorous beach-style outfit, this kaftan has it all. Sheer leopard-print fabric with lots of movement and beautiful golden accessories needs to be worn with plenty of attitude.

BOHO BEACH

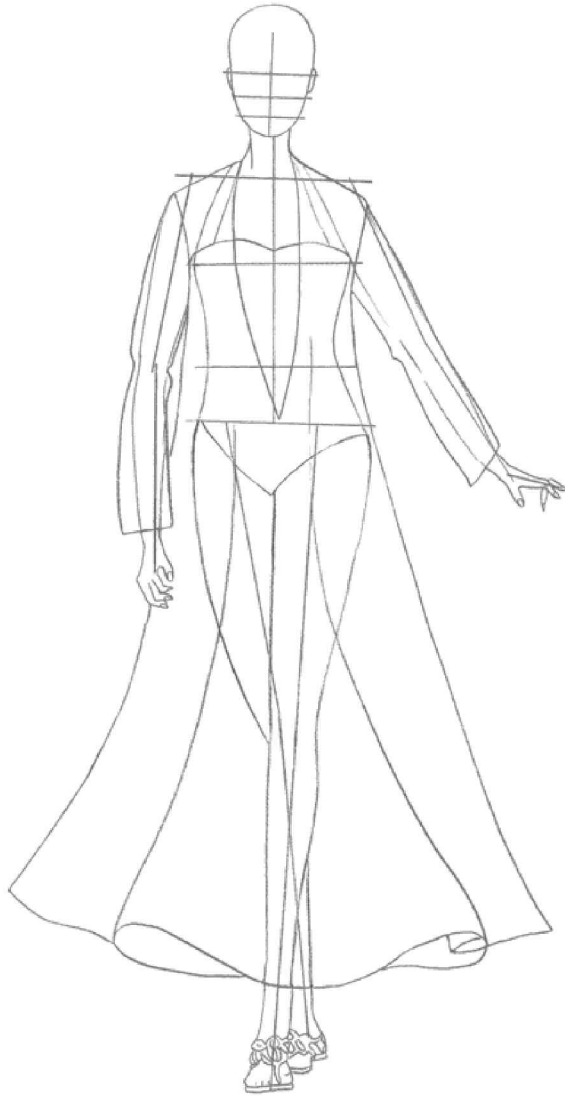




1 For this outfit we need a simple model pose. Keep the lines straight and clean.



2 Add the ball shapes to the joints and cylinders for the limbs and torso.



3 Now draw the dress shape, which is large and flowing over a simple bathing suit. Sandals are added to this outfit with intricate details to complement the kaftan.



4 The hair and face details are now added. Keeping the hairstyle simple and swept up off the face in a high bun gives the feeling of height. It also helps enhance the shape of the kaftan from the shoulders, flowing down the arms.



5 Lovely summery jewelry is added to this model— chunky bangles, large hoop earrings, and, of course, shades. Adding a long pendant necklace helps give focus to the feature V-neck on the kaftan. The bathing suit has stripes added to the sides to enhance the model's shape.



6 Time for the ink. Adding thicker lines around the base of the dress to show the fullness of the skirt really works well. Also, thicker lines around the jewelry and shades helps them stand out.



Stylist's tip

Having the arm gently out to the right enhances the movement of the soft, sheer fabric used for this kaftan.

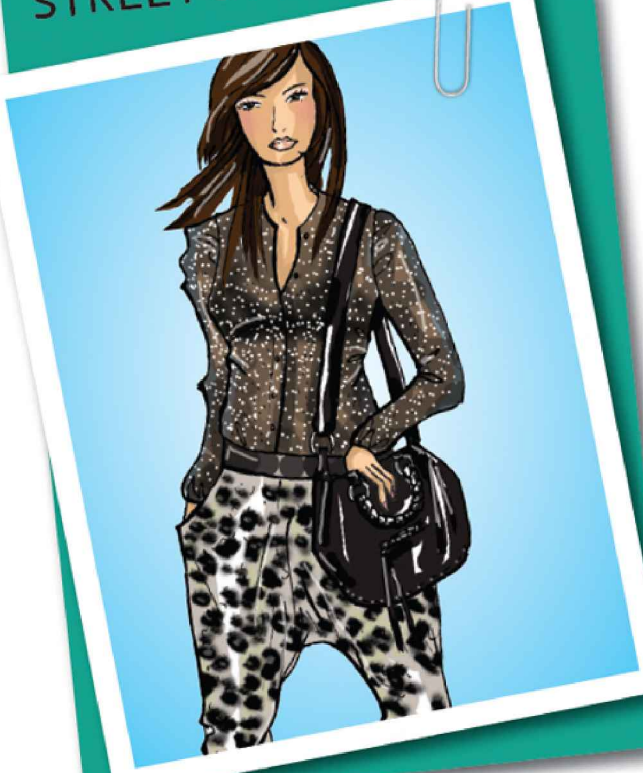


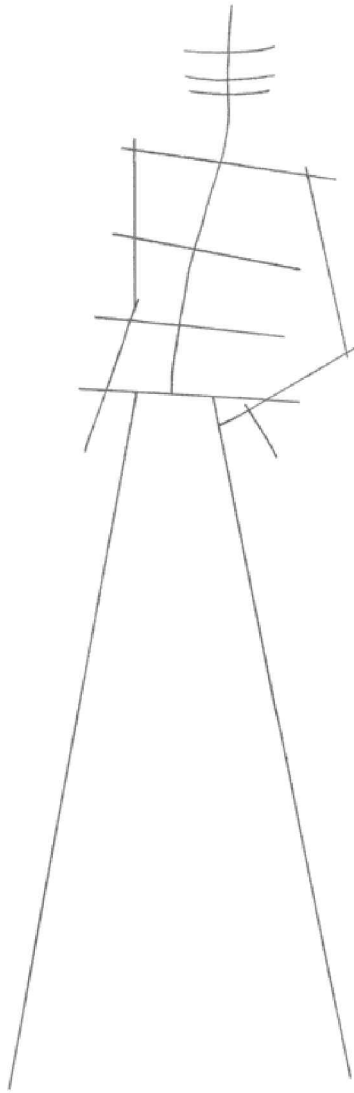
7 Soft browns are used for this leopard print, overlapping slightly in places to show the fullness of the fabric. Golds and bronzes are used for the jewelry, sandals, and shades to keep the look soft against the black of the bathing suit. Finish off with sunny blond hair.

Mixed Animal Prints

This multi-mix of animal prints is great for making a statement. Bold and versatile, it can be dressed up or down. This is the ultimate girl-about-town look which is bang up to date.

STREET STYLE





1 Start by creating your frame. This model has relaxed shoulders and arms but strong legs, so keep the legs straight and softly bend the elbows.



2 Add the body shapes over the frame you have drawn using the cylinder and ball shapes.



3 Over the body shape, draw in your clothing. Keep the lines soft and curved to show the creasing of the harem pants and shirt. Add simple boots.



4 Now draw in your facial features and hairstyle. The hair is loose and by using curved lines going over the shoulder, it will give the model movement. Also draw in the button detail on the shirt.



5 At this stage, softly draw in the print detail for the shirt, pants, and shoes. Small dots and swirls will help you know where to ink and color later.



Add an Accessory

Due to this outfit having lots of print going on, we keep the accessories to a bare minimum. Adding a purse with tassel detail is enough.



6 Over your finished pencil, start working with the ink. Use soft, thin, curved lines for the creasing on the clothing, tassels, and hair. Then use thicker lines around the bag and shirt.



Stylist's tip

Drawing the bangs parting on the opposite side to where the hair is swishing away gives the model a relaxed feel.



7 Black, white, and gray are mainly used on this outfit, with the exception of the tan leopard-print boots. Keep the shirt sheer and soft so you can see a subtle impression of the body underneath.

STYLE CARDS

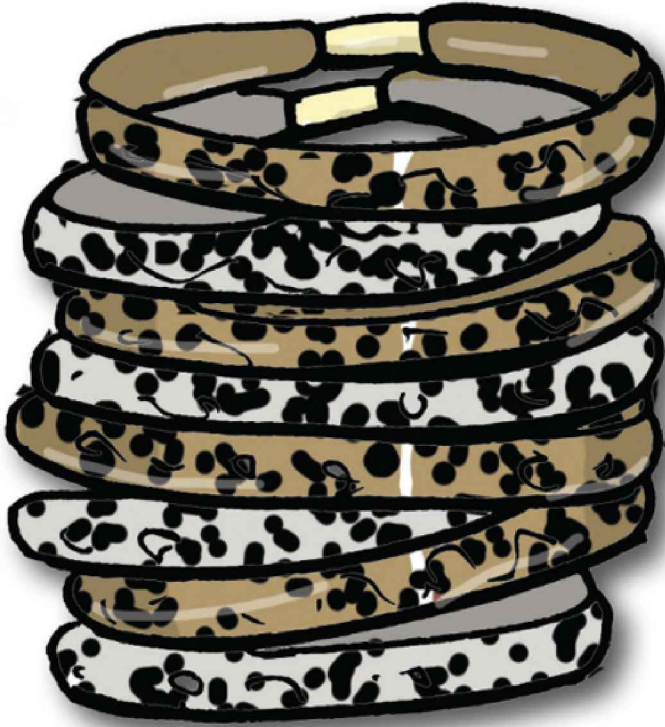
You can find animal print on all sorts of accessories. Although care needs to be taken when putting them together on one outfit. This trend is great fun to experiment with.



Leopard-print nail transfers work well over different base colors.



Fun animal-print dress rings are ideal for making a statement.



Add animal print into your hairstyle with these fun hair bands.

SHOES:

Whether working the animal print in killer heels or pumps, shoes are a great way to work the look.



Perfect pumps enhance a daytime outfit.



Zebra print adds style to a pair of high-heels.

PURSES:

Animal-print purses, large or small, can make a statement and enhance a plain outfit in their own way.



Keep it subtle with a small leopard clutch.



Make a statement with this large zebra-print purse.

ACCESSORIES:

Animal print can be used on any accessory whether it is a hat, scarf or shades—you need never be without it.



This large animal-print bangle will finish off any outfit.



These shades are perfect for summer animal-print style.



Top off an outfit with this leopard-print hat.



A sheer chiffon animal-print scarf is great for day or evening.

BOLD AND BRIGHT

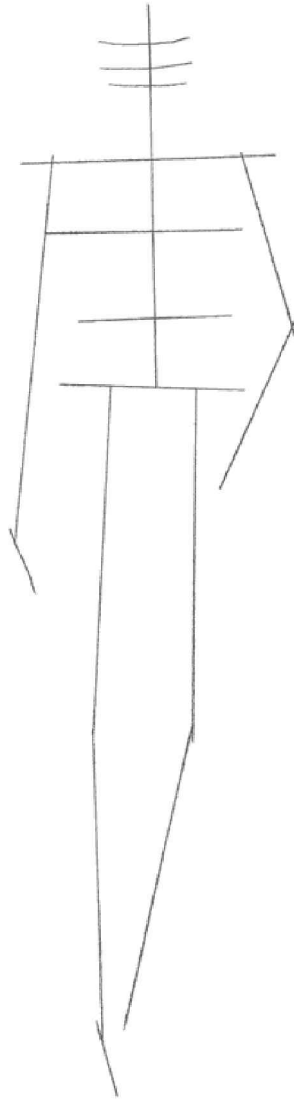
Vibrant outfits and accessories are not for the faint-hearted. You can't be a wallflower with a neon skirt or a dazzling jacket—and with such stunning outfits, why would you want to be anything other than bright, bold, and beautiful?



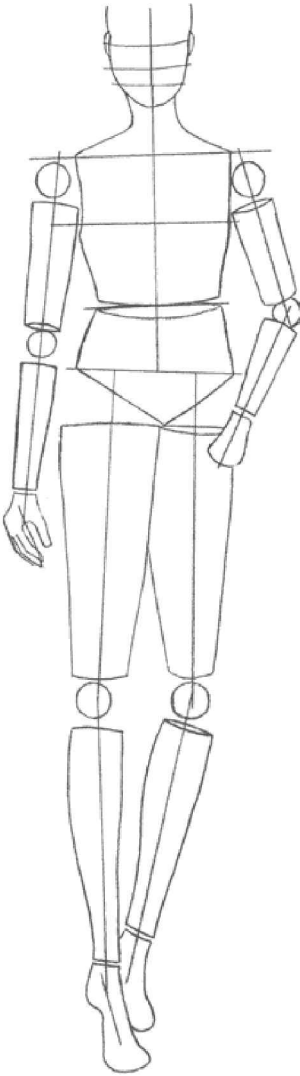
Stylish Color Blocking

This lovely winter coat with faux fur trim and matching hat is placed over a wonderful, brightly colored top and skirt for an exciting contrast and twist to the outfit. This proves that winter clothes don't have to be dull.





1 Create the frame of your model. For this relaxed pose, use straight lines with a gentle bend in the knee.



2 Build up the frame using the basic shapes to fill out the body.



3 Pencil in the outfit using soft lines. The lines need to be curved to show movement in the fabric. Add crease lines to the top where it is baggy at the waist and add simple shoes.



4 Add the facial features and the hair—the hairstyle is a simple bob, again using curved, soft lines to give it movement. Large buttons can to be added to the coat.



5 Now it's time to add the extra touches. A neck scarf is added to the outfit to enhance the faux fur collar and a simple clutch finishes it off.



Add an Accessory

A faux fur hat to match the collar on the coat finishes off the outfit. Use a rough line for the hat to give the impression of fur.



6 Start inking in your pencil. Use thick and thin lines on the sweeping curves of the skirt and also around the coat to give the impression of weight.



Stylist's tip

To emphasize movement, kick the curves out to the side near the hem of the skirt.



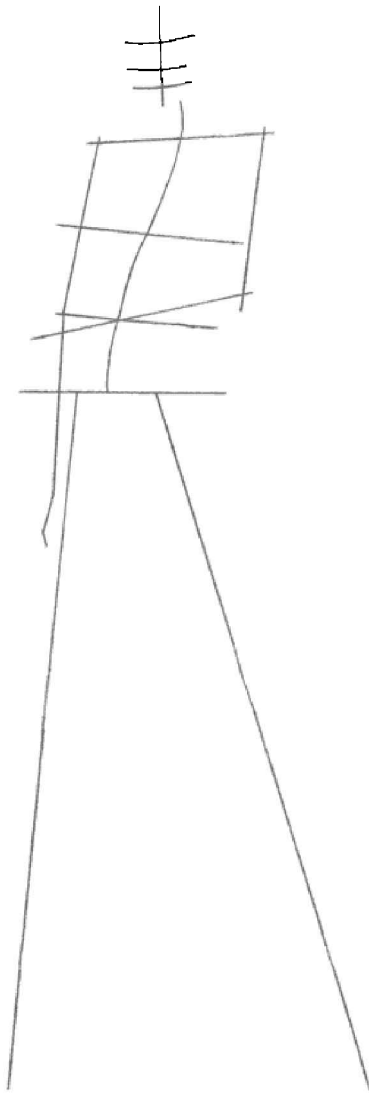
7 Soft browns and nude are used over a combination of bright red and orange for the outfit. A multicolored print scarf incorporating the colors really helps bring the outfit together.

Neon Green Skirt

This bright outfit shows how a simple sleeveless white shirt can be transformed with eye-catching neon green and bright matching accessories.

TRENDY WORK





1 Draw your frame with a curve through the body to put the shoulders back and hips forward. Keep the stance with strong legs.



2 Create your body shape, using cylinders and balls to give the figure structure and form.



3 Start drawing in the clothing. Show the pleating on the skirt with quick lines drawn following the direction of the legs. Add a zigzag for the hem. To make the outfit really stand out add some striking strappy heels.



4 Add the facial features and hairstyle to your sketch. By giving the model a topknot swept away from the face, you give more focus to the outfit.



5 Make sure that when you add the pleat lines they follow the line of the skirt. Pay particular attention to the kick out at the back. Here the lines will flare out also, instead of following the line of the body.



Add an Accessory

Now it's time to add the fun accessories. A chunky feature wristwatch gives the outfit a quirky look. Drop earrings and a clutch mean this outfit could work on a day out or for the evening.



6 The next step is to add the ink. Work over the pencil, taking particular care with the pleats on the skirt. Also use thicker lines where the shadows will fall—for example under the collar, clutch flap, and the skirt hem.



Stylist's tip

Use a dark and light green on the skirt pleats to show where the shadow and light will fall.

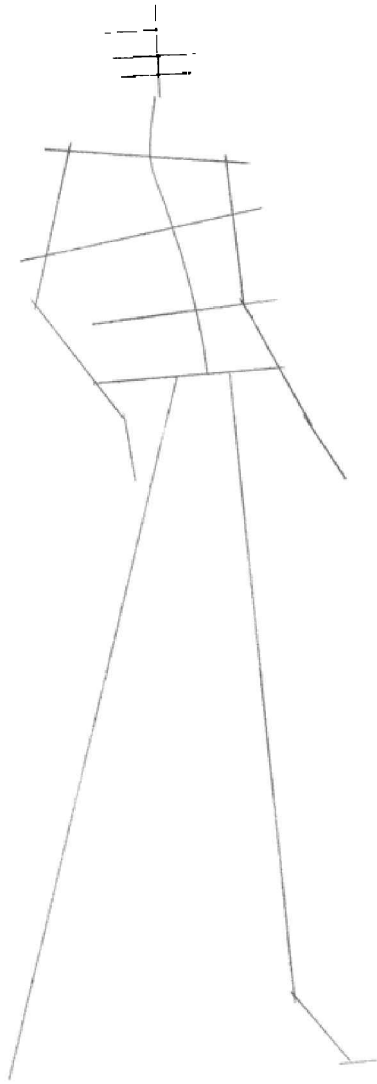


7 Finally, add the color. Shade the white top with a soft gray to show the shadows. Using a bright neon green, color the skirt and accessories. Finish off with black and neon green shoes.

Statement Skinnies

This outfit is full of color with dip-dye detail to the jacket over a bright orange top. Both are pulled together with a pair of multicolored print pants.





1 This is a strong pose that works well with this bold outfit. The shoulders are back and hips are pushed forward with a legs-apart stance.



2 Add the basic shapes of cylinders and balls for the body and joints.



3 Draw the outfit onto the body. Use the curve of the body for the line of the jacket. Add detail to the top where it creases. Keep the pants slim and straight to complement the high-heeled sandals.



4 Add the face detail and the hair. A long loose hairstyle works well with this outfit as it flows over the smart jacket collar.



5 Now add small, curved lines to show where the print on your pants will go.



Add an Accessory

We've chosen an oversized purse to pull this outfit together. A large block of color will contrast nicely against the busy print on the pants.



6 Using your finished pencil as a guide, start to work on the ink. Use a heavy line for the shadows—under the jacket collar, under the shoes, down the legs, and under the buttons.



7 Working with the color, use the orange and green from the top and the jacket for the pants print. Add further complementary colors such as pink and yellow to make a lovely color mix. Keep the shoes matching and the purse dark to make it really stand out.



Stylist's tip

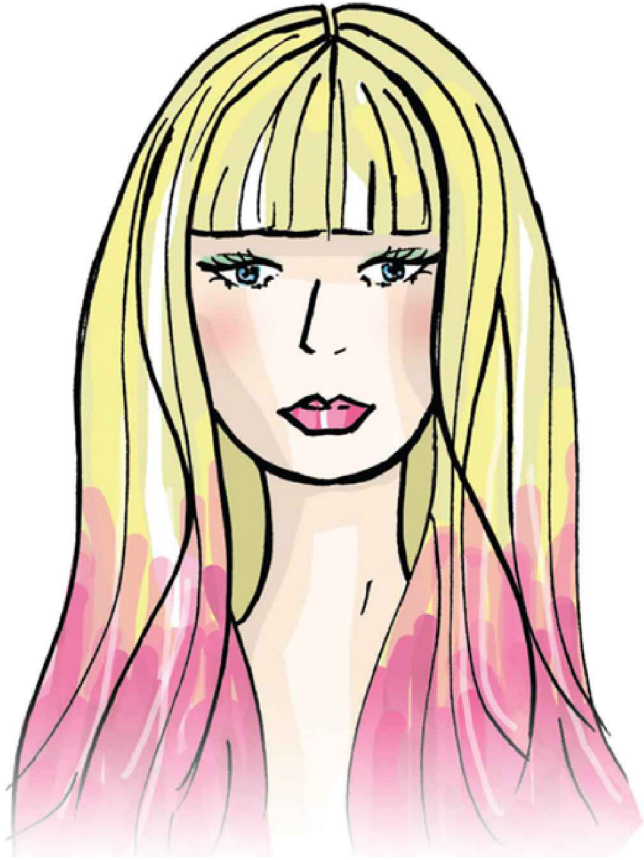
When adding color to the jacket, use a soft line between the two colors so one color gently blends into the other.

STYLE CARDS

Bright colors work well for a fresh, youthful look. You can reflect the style through some great, bright accessories. Go multicolored or keep to one bold color. No matter how you use your accessories, step out and have fun!



Add a bright wristwatch for a strong look.



Be brave and bold with this dip-dye hairstyle.



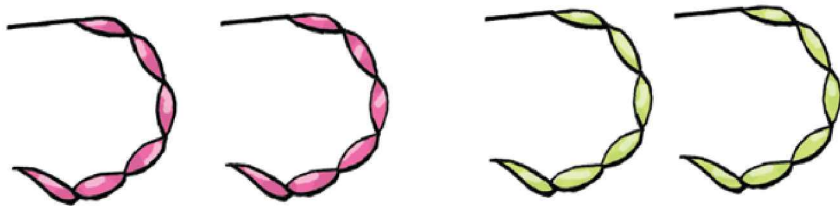
Brighten up a pair of simple black pants with these super bright belts.

ACCESSORIES:

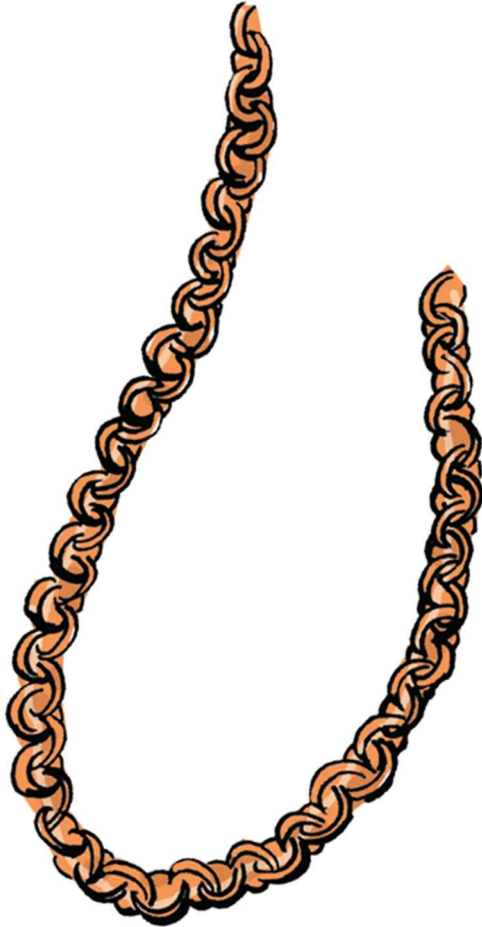
Bright jewelry can be used to pull any outfit together. Adding bold necklaces or delicate earrings to an outfit can be key. Keep it light, bright, and fun.



Add some glamour with these long beaded earrings.



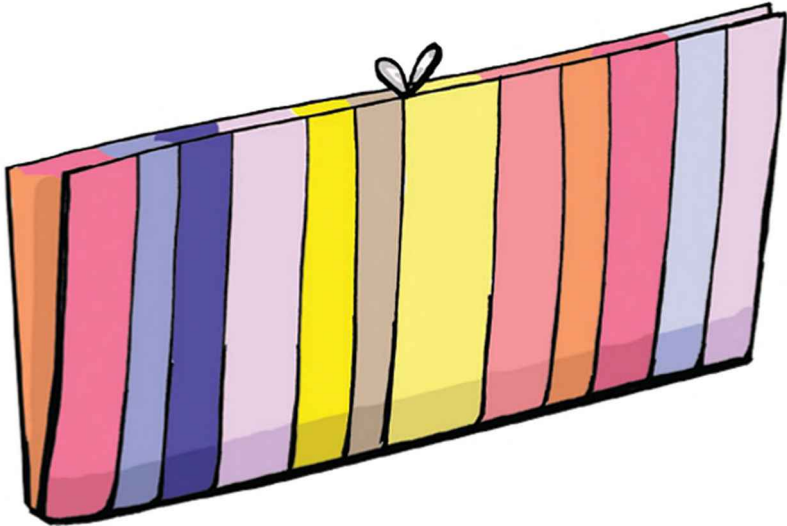
Keep it simple with these twist hoop earrings.



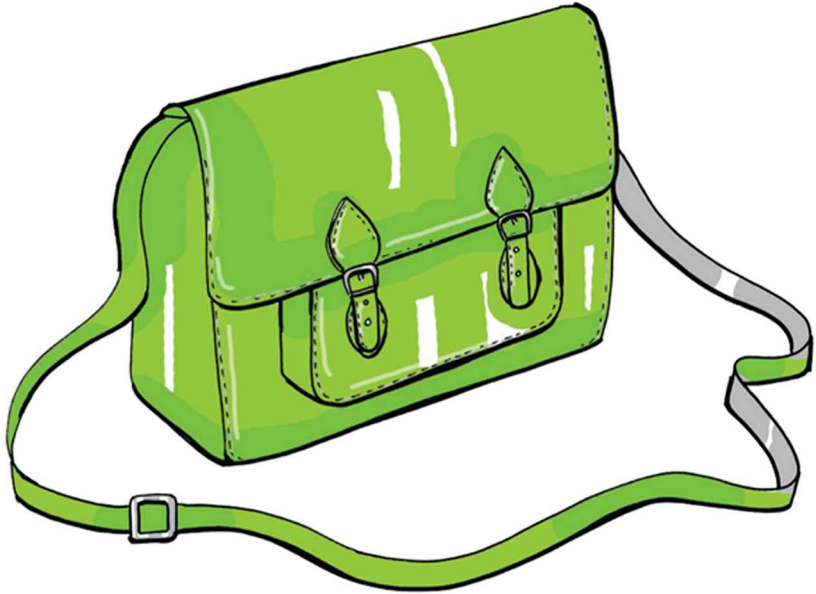
Mix and match bright necklaces.

PURSES:

A bright purse can be mixed with other bright accessories or can look great on its own to enhance an outfit.



Complete the look with this multicolored clutch.



Team this purse with a simple outfit to make it really stand out.

SHOES:

Keep it bright all the way to your toes with these fabulous shoes. For bright summer style use wedges, sandals, or pumps.



Step out in these slip-on sandals.



For evening or day these paint-thrown wedges make a statement.



It's bright and shiny with these patent pumps.

NAILS:

For bright-style nails use multicolored shades. Add extra nail paint patterns over the top to really make a statement.



Try your hand at nail art in funky, strong colors.

VINTAGE CHIC

“Vintage” is the new buzzword in fashion. But with retro flair comes a danger. Make sure you get the styling spot-on and pair your outfit with the perfect accessories to ensure your look is glam and not grandma...

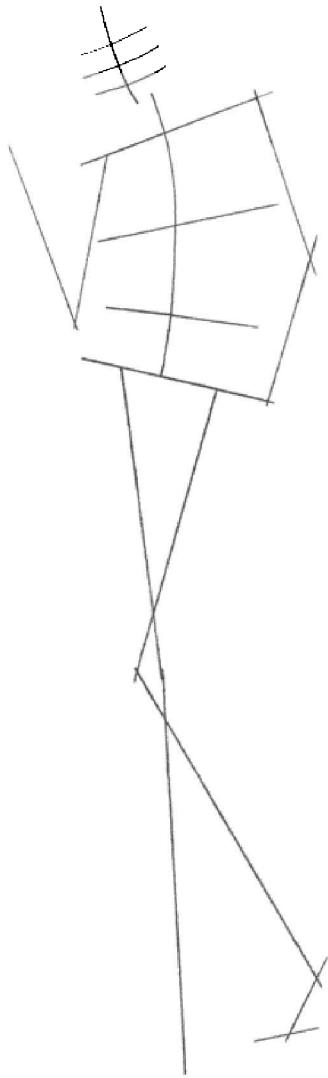


1920s Flapper Dress

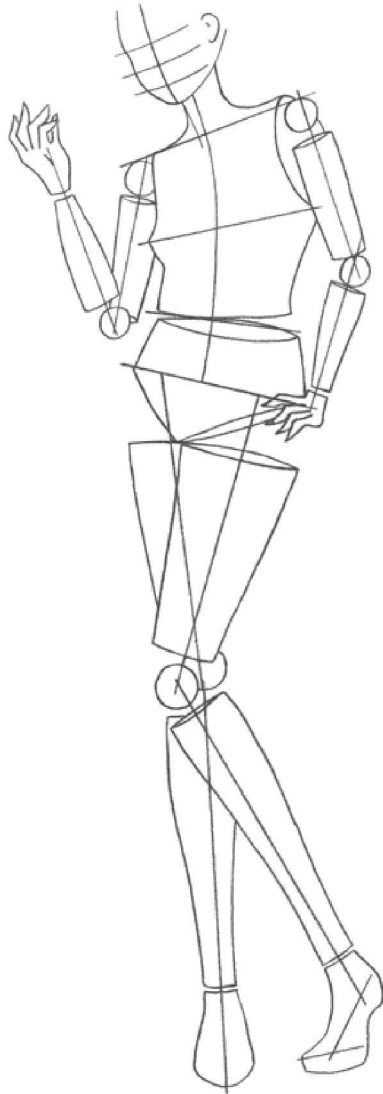
One of the most influential designers of the 1920s was the French designer, Coco Chanel. Her Flapper Dress became iconic as it portrayed women's new freedom of movement. This dress has a wonderful floaty feel and the sequin panel adds glamour. The feature sparkly headband and ostrich skin purse completes the vintage look.

VINTAGE GLAM





1 This outfit needs a pose to show off all the accessories. A curve through the body works well to demonstrate the hang of the dress.



2 Work up the body structure using the basic shapes.
The bend in the knee complements the model's raised right arm.



3 Add the shape of the dress. Draw in the central sequined panel following the curved line in the body to keep it in the correct place.



4 A classic 1920s up-do works well with this outfit, keeping the hair away from the face. Add the facial features, and remember you can use the hand as a focal point for the eyes.



5 The wristwatch and dress ring are best shown if placed on the hand opposite the raised one. Drop earrings complement the hair, and the outfit is then topped off with a gorgeous sparkling headband with flower detail.



Add an Accessory

To focus attention on the sparkly panel in your dress, add a small purse in a complementary color. Place the purse in the elbow of the raised arm—by putting it at an angle, you give it some movement.



6 When adding the ink, use a dotting detail on the purse to show the ostrich embossing. Also show the large sequins on the panel, but only in patches, rather than all over. Take care when inking the chiffon as this line needs to be very light and can even disappear in places.



Stylist's tip

Check out vintage shops for fantastic clothing inspiration and accessories to enhance current outfits.



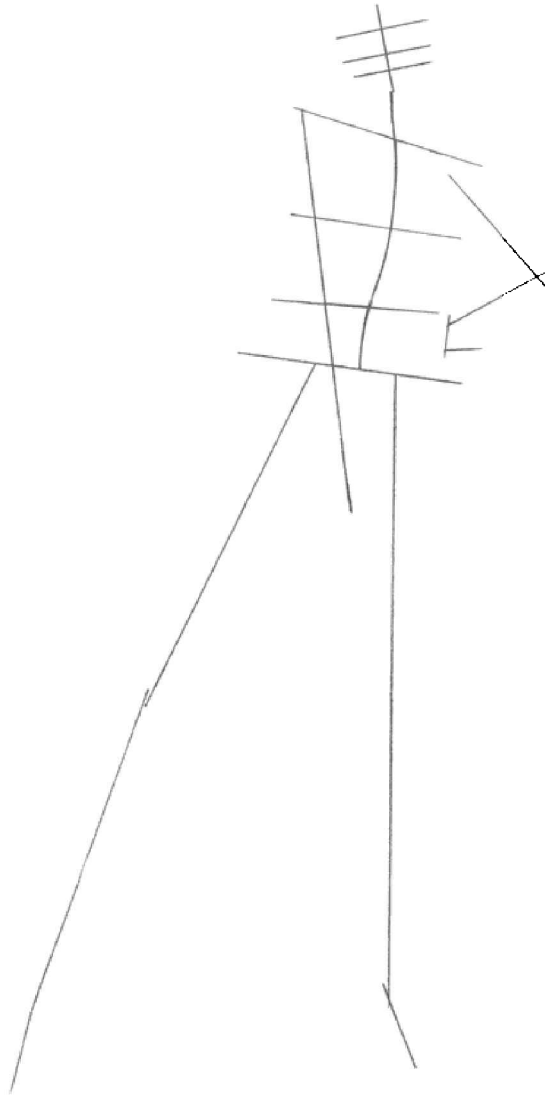
7 Ready for the color. Pale nudes and dusty pink with just a touch of gold work well with this outfit. Keeping the colors subtle will make the most of the sparkle in the sequined panel and headband.

1950s Polka Dot Dress

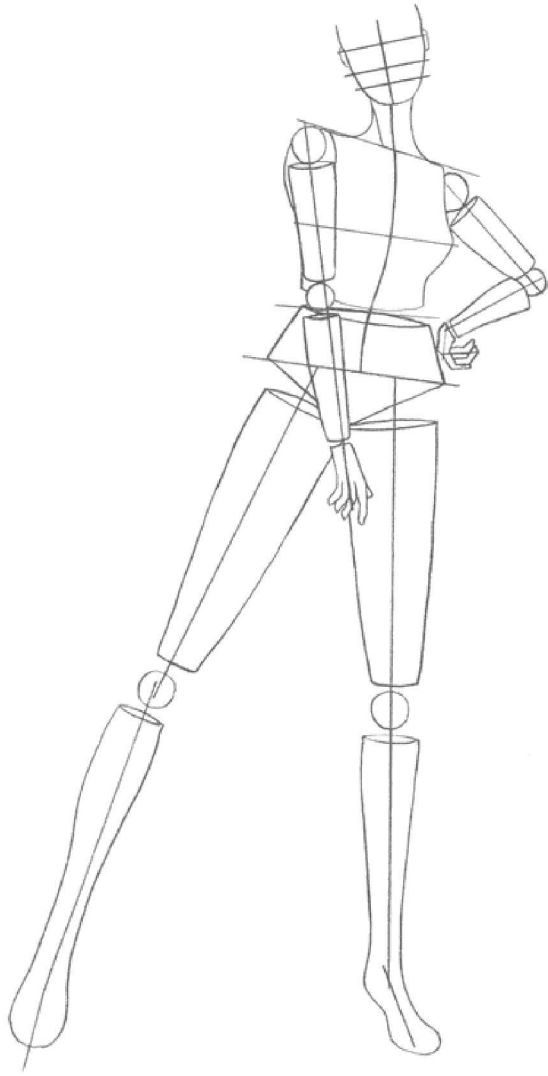
French designer Christian Dior became the most iconic designer of this time. He broke the mold by using much more fabric in his designs, creating dresses with swinging skirts that gave women back their curves.

VINTAGE POP





1 Create a gently curved pose for this outfit. This will show the silhouette of the dress and the fullness of the skirt.



2 Add the basic shapes to fill out the body around the frame you have drawn.



3 Put in the shape of the dress, following the lines of the body and coming out at the waist for the skirt. Add lines to show the gathering of the skirt, which indicates its fullness. Adding darts under the bust will give the dress the feel of a nipped-in waist, which was very fashionable in the 1950s. Add the basic shape of the shoe with a classic heel.



4 Giving the model a relaxed flowing hairstyle will enhance the softness of the dress and the pose that the model is in. Bow details added to the court shoes are enough to complement the simplicity of the dress.



5 Using a sharp pencil add dots to the dress. Only add the dots in patches to avoid them looking too heavy. Simple jewelry works well with this look. A beaded necklace and bracelet are enough to set off the simple dot print of the dress.

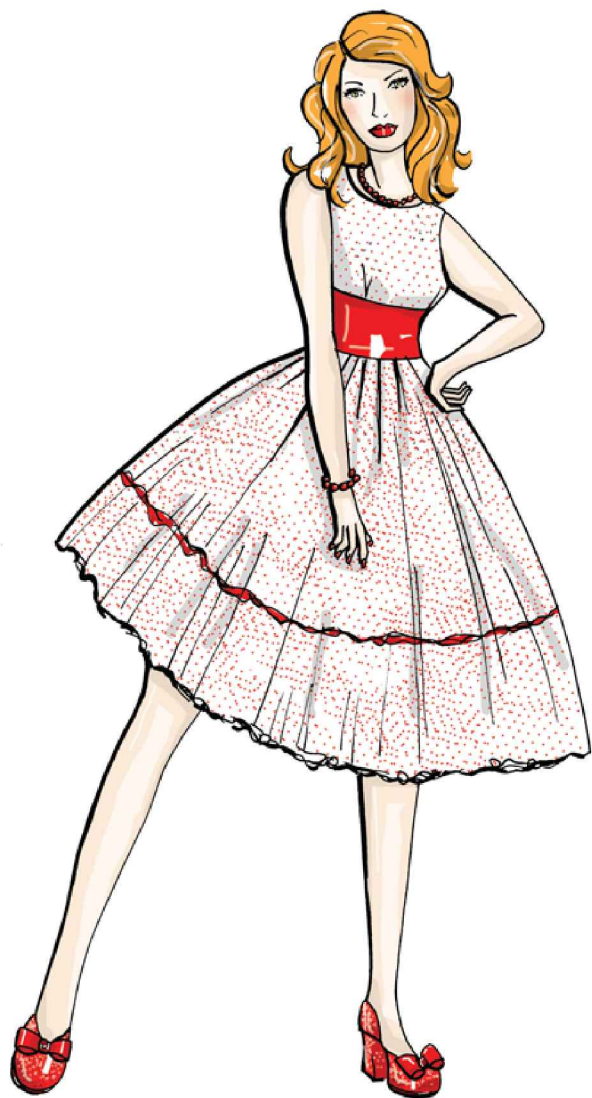


6 Start to work with the ink. Use thick lines, which run thinner or disappear completely for the gathers in the skirt to keep them soft. Use a heavy line around the base of the skirt to show its fullness. Also add thicker lines under the jewelry to give the beads a rounder look.



Stylist's tip

Having a tilt to the head enhances the curl in the hairstyle.



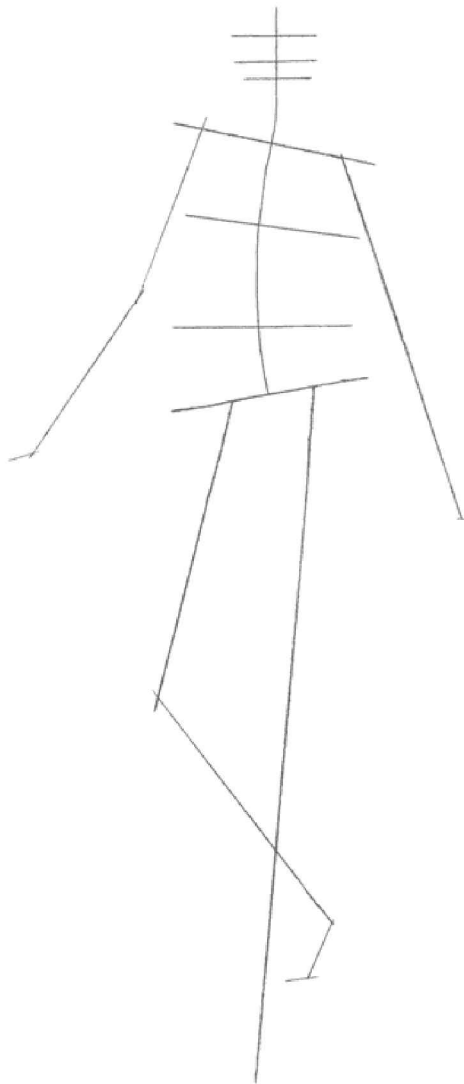
7 As this dress is white, we use a subtle gray to show the shadows. The red dots, skirt trim, belt, jewelry, and shoes are enhanced by red lipstick and red hair. Don't forget to add sparkle to the shoes!

1960s Mini Dress

Fashion in the 1960s changed dramatically. Thanks to British designer Mary Quant, the mini-dress became one of the most popular items from this time. Quant led the way and changed other fashion designers' attitudes forever. Skirts became shorter and eyelashes got longer!

VINTAGE PREPPY

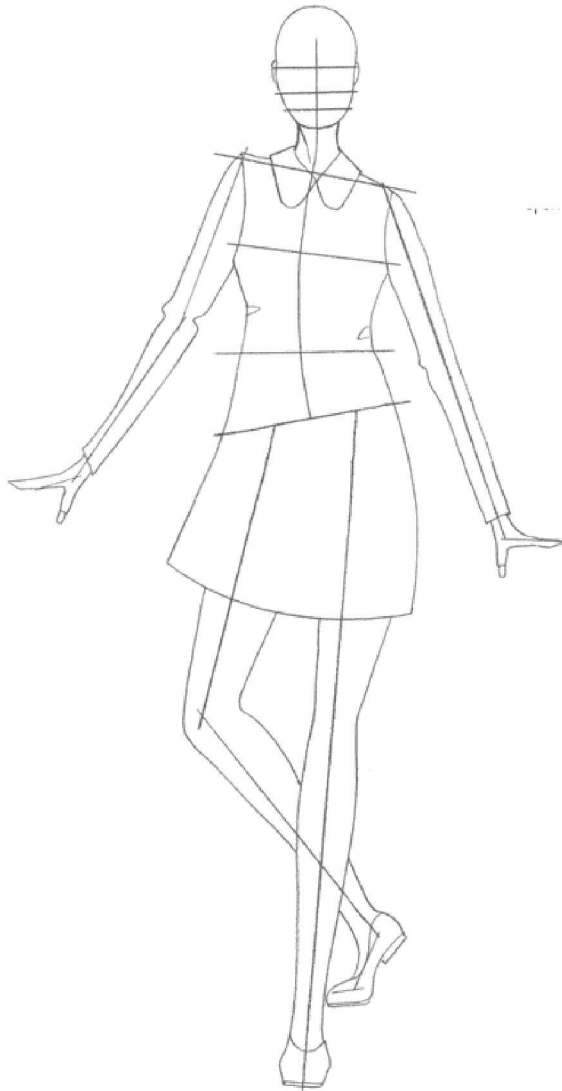




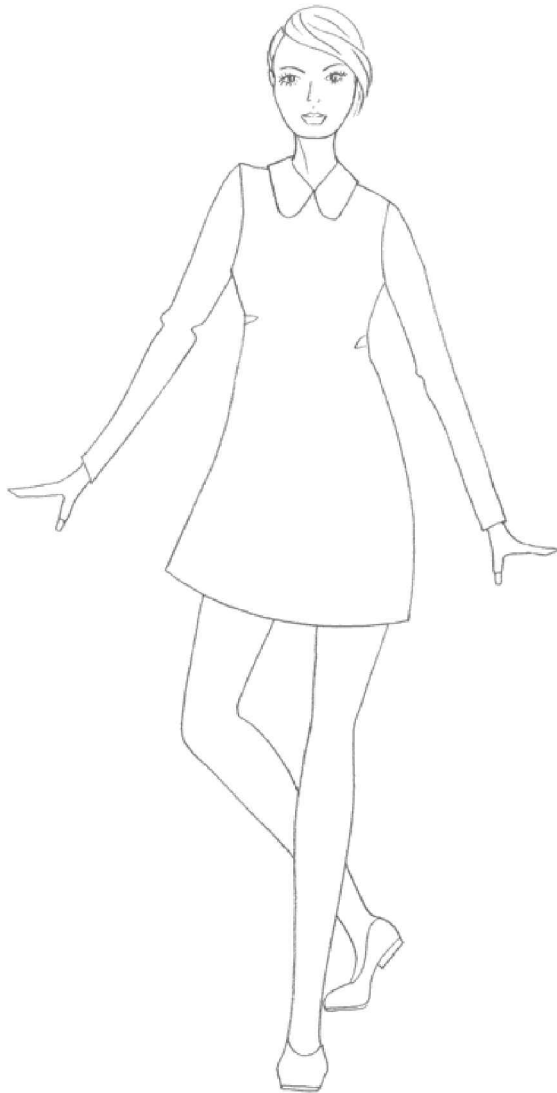
1 This model needs a fun pose to reflect the fashion of the 1960s. Create your frame using clear lines showing the figure's proportions.



2 Build on your frame using basic shapes. The cylinder and ball shapes create the structure of the body.



3 Add to the body using simple shapes for the outfit, which has a short hemline and long fitted sleeves. Adding an oversized collar gives the dress quirkiness.



4 Eyes were key in the 1960s. They needed to be large with long eyelashes. Keeping the hair short and in a simple style will make the eyes seem even more dramatic as well as making the model seem taller and slimmer, which was a very fashionable look at the time. The dress is complemented with simple pumps.

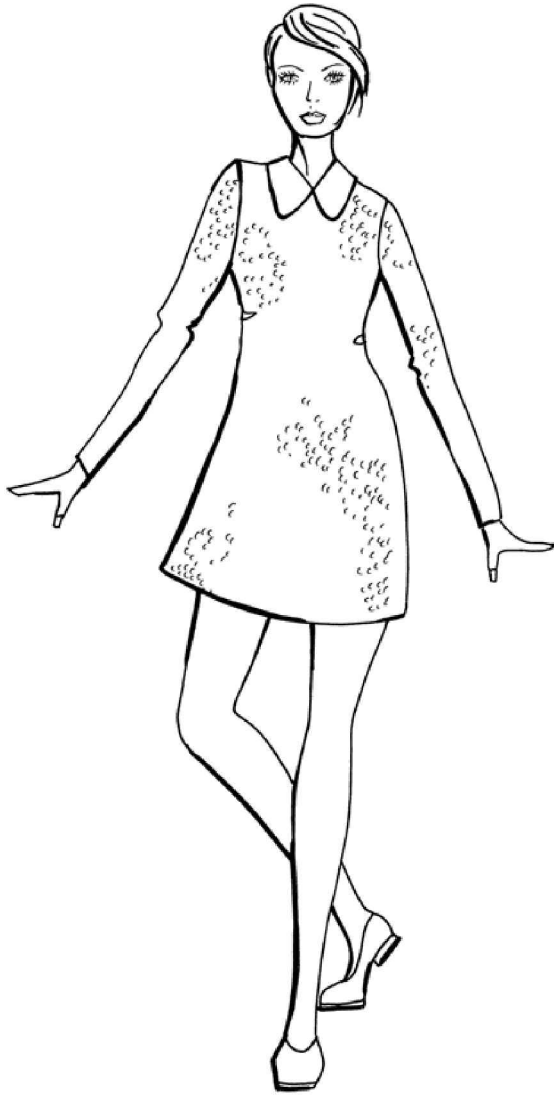


5 Use tiny, half-drawn circles to mark where the sequins will show on your dress. Don't cover the whole outfit—just showing shine in places will give a much more realistic feel.



Add an Accessory

The only accessories to this outfit are the large sequins sewn all over the dress fabric, excluding the collar.

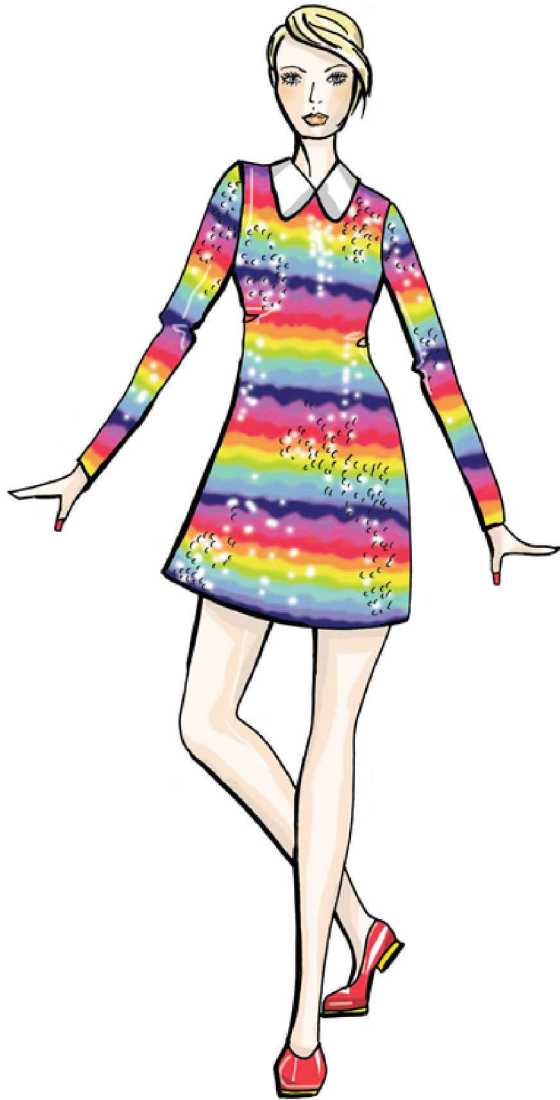


6 Time for the ink. Working over the pencil, pay attention to where there will be shadows—under the collar and also under the bangs on the face.



Stylist's tip

Use soft lines for your colored stripes to give the impression of the colors running into each other, like a rainbow.



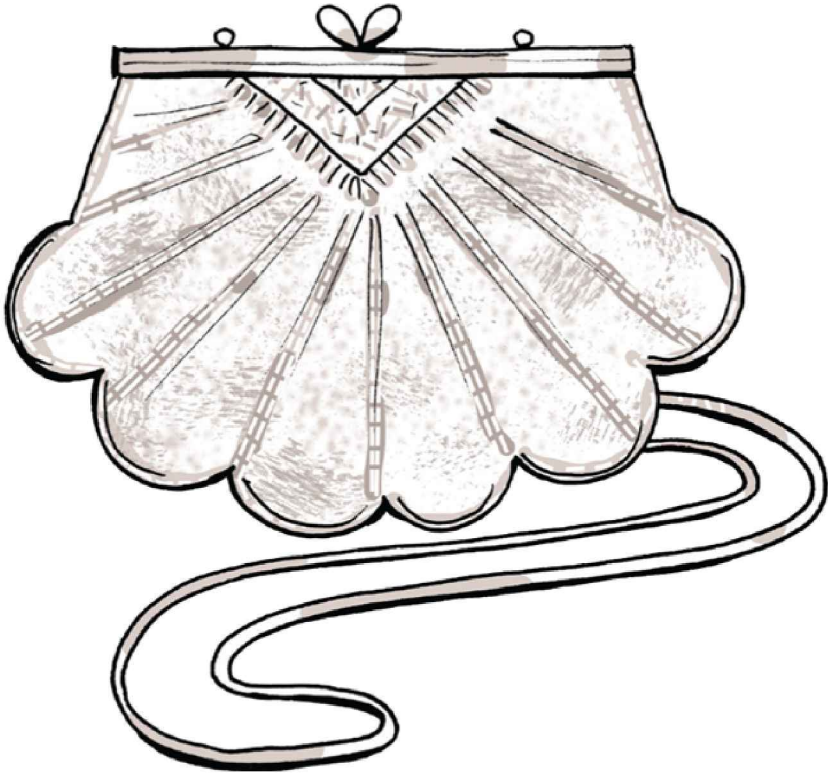
7 The final step is for color. Bold rainbow colors are used all the way down the dress and the sleeves. Adding large dots of white to the dress gives the impression of light reflecting off the sequins.

STYLE CARDS

Vintage-style accessories are everywhere. Whether you are hitting the high street or raiding your mom's wardrobe it is totally on trend. Accessorizing with vintage purses and shoes can really work an outfit. Go back in time and get inspired!

1920s:

Pearls, beads, and hair accessories have the wow factor from this decade.



Beautiful and stylish, this beaded purse is stunning.



Add an element of elegance with this beautiful feature headband.



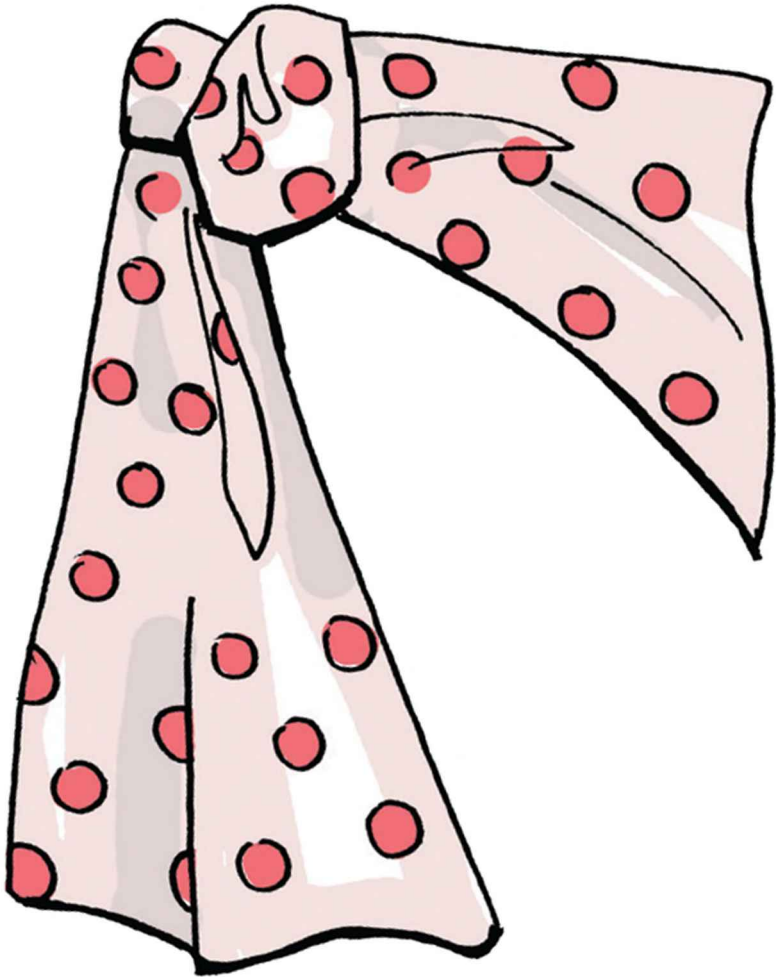
Elegant T-bar shoes finish off a stylish outfit.



Long pearls were a must-have for the 20s girl.

1950s:

The 1950s accessory style is feminine and stylish, from pretty heeled shoes to girly glasses.



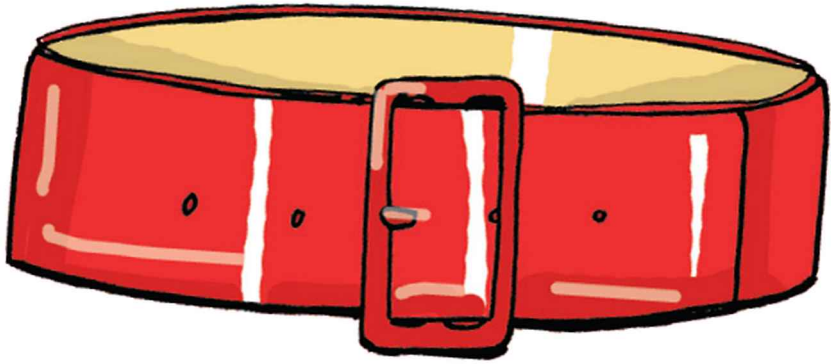
Pretty polka dots are a must for the 1950s style.



*Make a statement with these 50s style glasses... not for hiding
behind!*



This bowling-style purse is a great addition to any outfit.



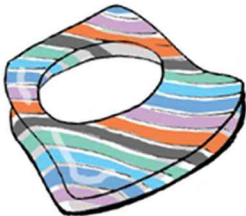
Add a thick belt for a perfect nipped-in waist and strong silhouette.

1960s:

Be bright, be bold, and stand out. The 1960s accessories are fun and fabulous!



For the ultimate 60s hairstyle it has to be a beehive.



Keep things colorful with bright and funky dress rings.



Top off your outfit with a stylish cap.



These bold wedges make a statement!

SPORTS LUXE

Score some fashion points this season with sports-inspired clothing. Items straight out of the sports hall are paired with glamorous accessories for outfits that are sure to win gold!

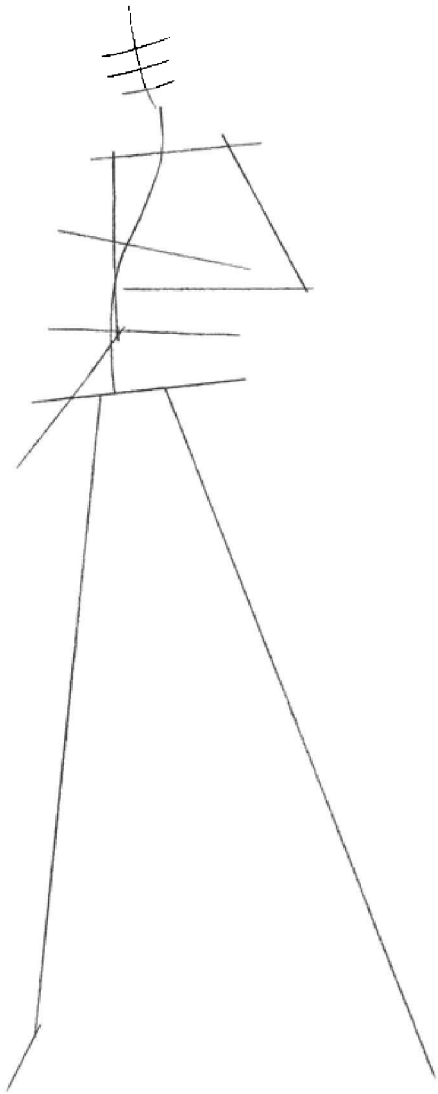


Nautical Romper

This fun sporty romper is a great addition to any

wardrobe. Accessorized with an oversized satchel, wedges and a sporty visor, it is ideal for fun in the sun.





For a fun outfit you need a fun model. Start with straight lines for your frame, adding a strong curve to the body and straight legs.



Use the cylinder and ball method to construct the body shape. To give the body movement twist the torso, which will push back the right arm and bring the left arm forward.



Draw the romper shape over the body with the collar and side tab details. The shorts need to follow the direction of the legs. Now add the wedged sandals with strap detail.



Give this model a long soft hairstyle with a side parting, which sits well over the shoulders. Keep the collar free so it is highlighted as a feature. Also add the facial details.



Before you ink, focus on your pencil lines. Make sure your shorts are well defined, otherwise your romper could end up looking like a dress!



Add an Accessory

To accessorize this outfit, a sporty oversized purse is worn across the body. Draw the purse strap underneath the collar, to keep the collar detail a feature of the romper. Top off the outfit with a fun matching visor.



Now ink your drawing. Fluid lines create a structured look to the outfit but still keep the look soft. Use heavier lines around the collar detail, side tabs, and sun visor to make them really stand out.



Stylist's tip

Taking a little extra care over the fine details like seam lines, buttons, and straps can make all the difference to your drawing.



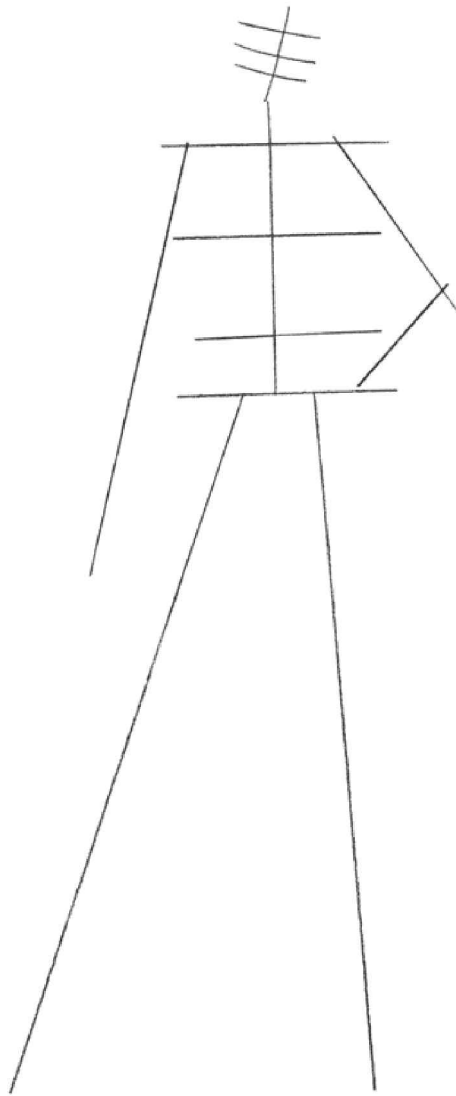
Light and dark shades of blue, with red highlights and the odd touch of white, give this outfit a fun nautical feel. Complement with dark hair and tanned skin to give it a really summery look.

Tennis Dress

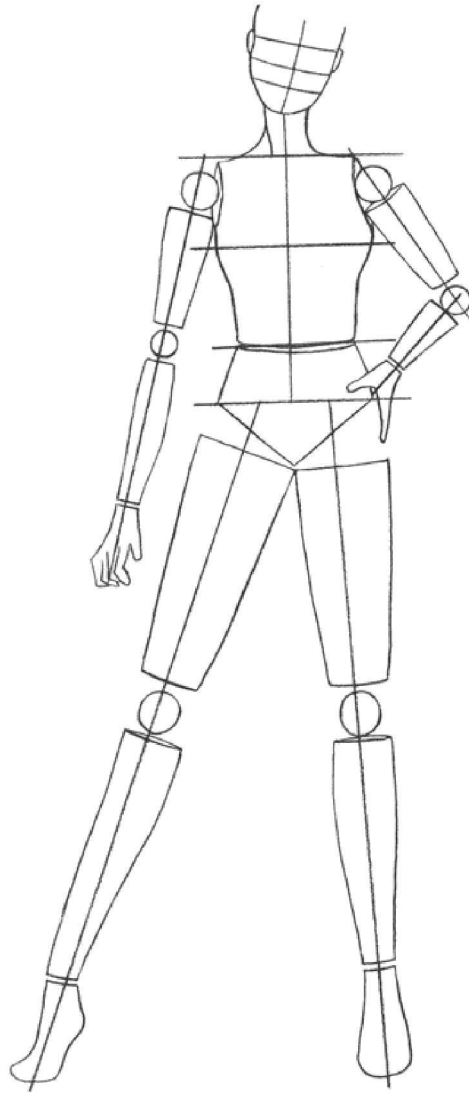
This little sporty dress is perfect for summer days out and has a definite chic style. Adding a pair of ankle socks with a ruffled trim gives the outfit a girly feel.

SPORTY DAY

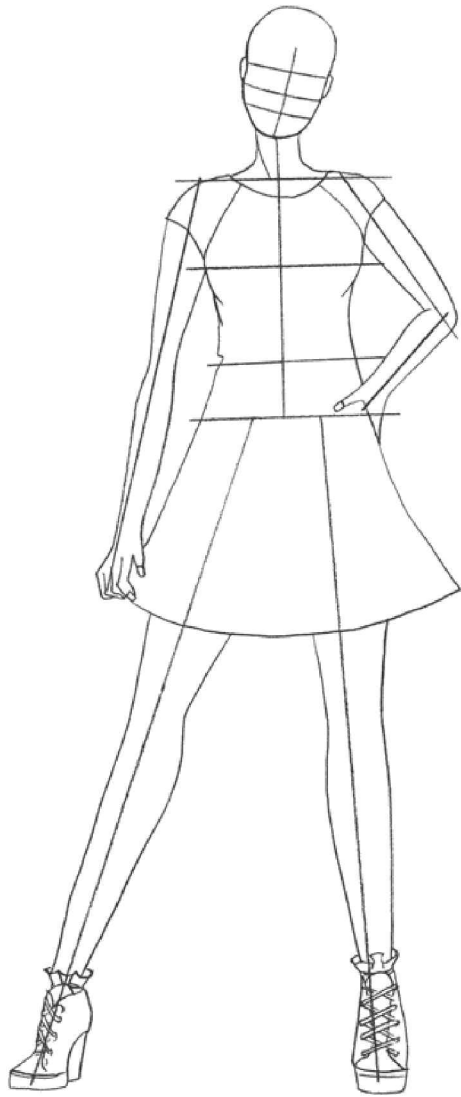




For this pose keep the frame lines straight, giving a gentle tilt to the head and a pointed toe.



Build out the body shape with the cylinder and ball shapes.



Now for the outfit. Draw in the dress over your body shape, giving a small flare to the skirt. Also at this step add a pair of heeled sneakers with laces and some sweet, ruffle ankle socks.



Sketch in the facial features and hairstyle. A sporty long braid looks great with this outfit. Swinging the braid away from the body gives the model movement. Keep the hair soft around the face to add to the girly feel.



Simple chic accessories need to be used with this outfit, try a lovely chunky bracelet with a pair of shades placed on the model's head. Add the panel detail to the front of the dress.



Time to ink your pencil. Use a heavy line around the skirt base and the underside of the bracelet and shades. Take care when drawing the braid, keeping the lines fine and neat to give definition.



Stylist's tip

Help to lift your picture by adding darker lines to the underside of the shoe strings and around the sock ruffles.

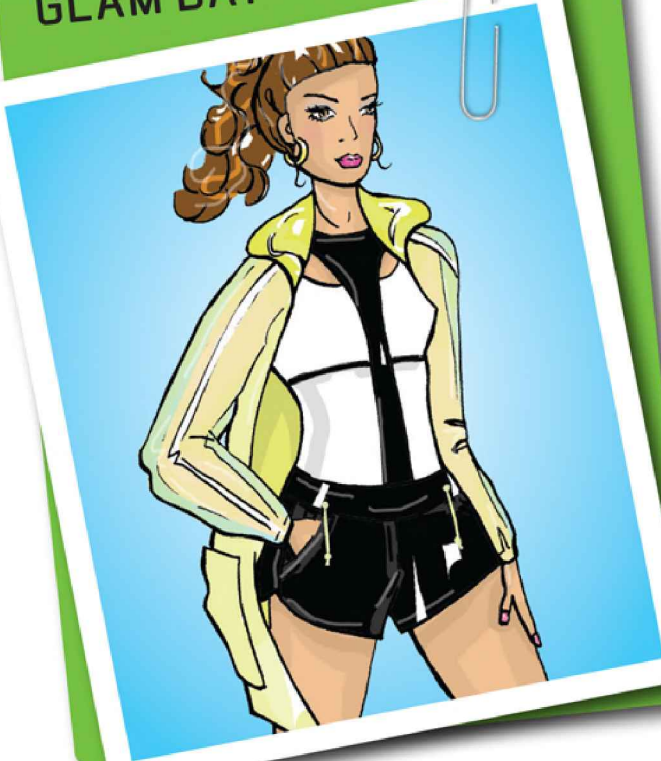


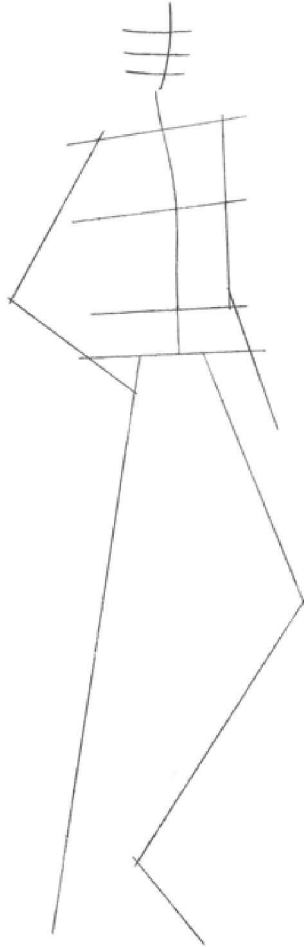
Working up the color, a combination of beige, orange, and cream is used for the dress. The outfit is tied together with matching orange accessories. A bright color is also used for the lipstick and nails.

Gym Glam

Not for a shrinking violet, this outfit really makes a statement. The colors are strong and bright and it looks great with simple hoop earrings and, of course, killer heels.

GLAM DAY





Your first step is to create your simple frame using straight lines. For this pose, give the front knee a bend to give the model a casual feel.



Construct your body shape using the basic balls for joints and cylinders for the limbs.



For this step, add the shape of the outfit over the body. Take care when adding the central panel to the outfit, making sure you follow the body shape down to the hips.



Add the facial detail and hairstyle at this step. For this model a high ponytail works well to give height and also lift the hair away from the neck and shoulders, keeping the hood and neck detail clear.



An ankle strap helps to draw attention to the model's long legs—made longer by the shortness of the outfit.



Add an Accessory

To complement the shoes, hoop earrings are added to this outfit for a touch of glamour.



Time to ink your finished drawing. Use fine lines for the details, such as the hanging cords on the shorts, and the seam details across the front and down the sleeves. Heavier lines can be used in the creases and under the hood.



Light lime green teamed with black and white is used for this outfit. These colors really stand out against tanned skin and keep the look fresh. The model has strong makeup to show that this outfit isn't just for the gym.

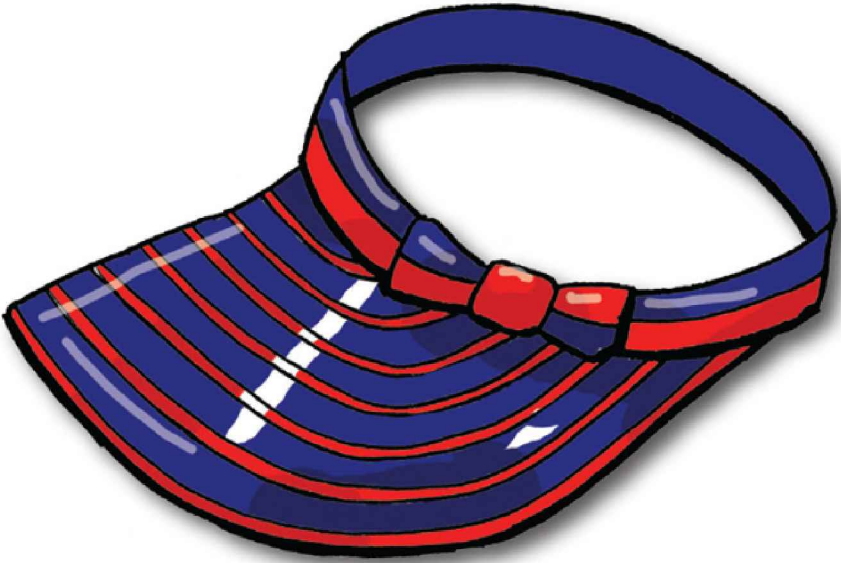


Stylist's tip

By adding a flesh color to the coat sleeves you can show where the arms would be, which will give the impression of how sheer the jacket fabric is.

STYLE CARDS

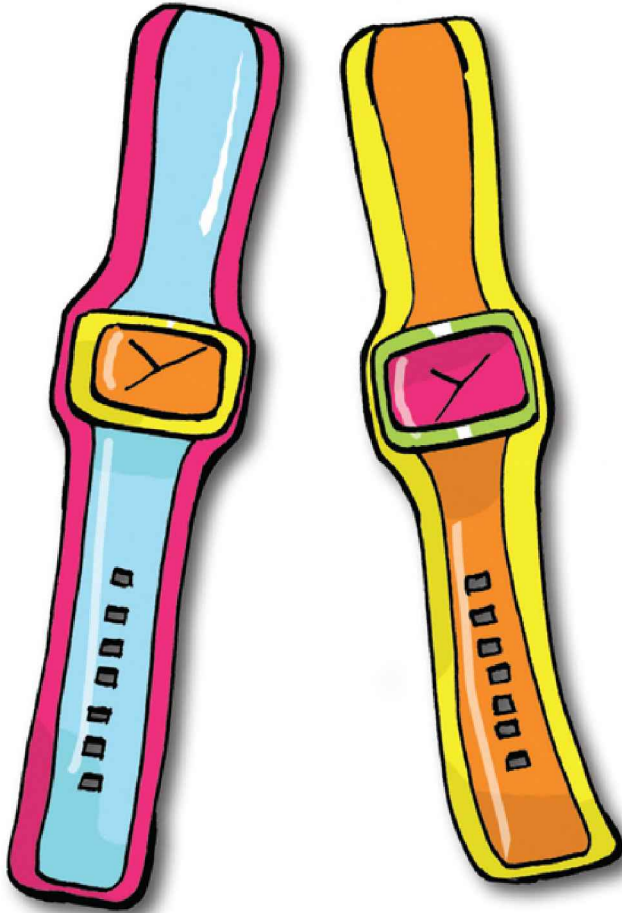
Get the sporty look with great accessories, whether you are working out or just working the look. Here are a few items that can really give you the sporty style from the top of your head to the tips of your toes.



Get the sporty style with this visor—a great addition to a romper or short sports dress.



For summer-style aviator shades are the perfect addition.



Simple and bright wristwatches add zing to your outfit.

HAIR:

Keep the hair up and away from the face with neat hairstyles. Buns and side rolls are great to hold your hair up—and keep it there!



Keep it simple with a bun and colored head band.



Give your hair a twist by rolling hair around the sides, neatly finished in a knot.

SHOES:

You can't have the sporty style without the perfect shoes. They are the most important piece in your

outfit. Whether they are practical sneakers or hot-looking heels wear them confidently.



Work the look in these killer heels.



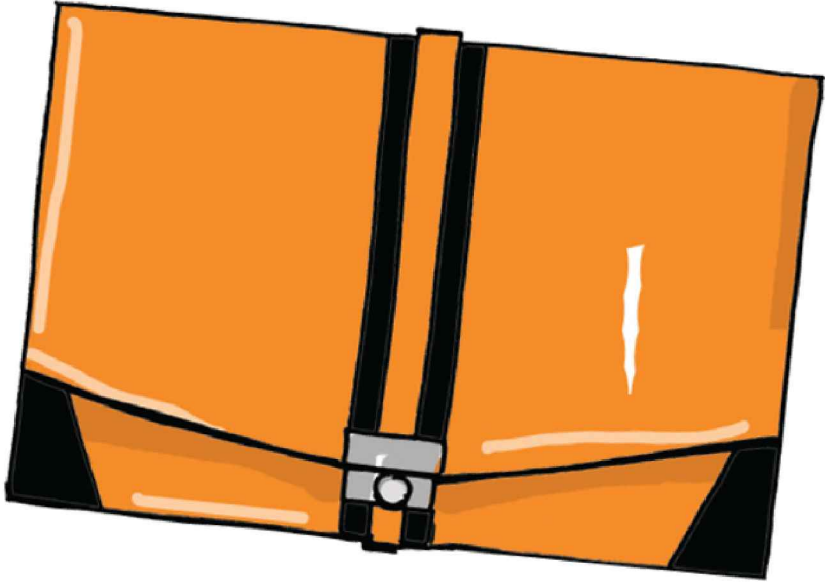
Keep it cool with wedge sneakers.



Sport socks don't have to be dull. Brighten up your outfit with bold stripes or fun heart ankle socks.

PURSES:

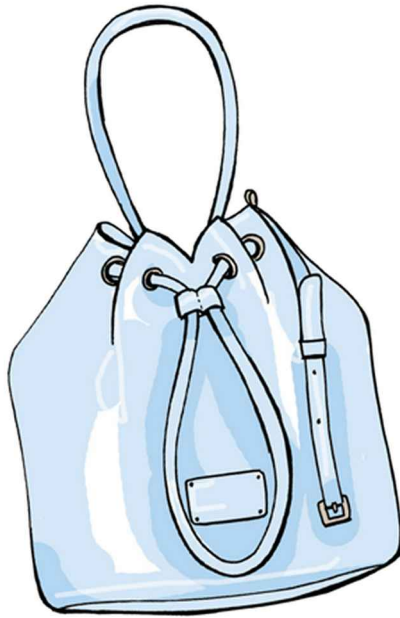
Whether you need a sports holdall for all your kit or a small clutch for just a few coins and your keys, a purse is essential to go with your sporty outfit.



Add a touch of chic to your outfit with this racing-stripe clutch.



Stand out with this pink barrel purse.



Choose a soft leather drawstring holdall for a casual sports look.

DESIGN ICONS

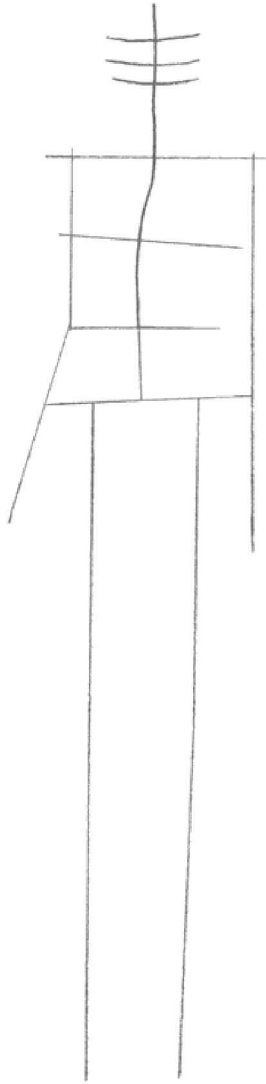
A catwalk collection is only as good as its designer. Here we look at three design icons who have shaped the look of the fashion industry with their bold statements and timeless designs.



Diane von Furstenberg

This iconic wrap-around dress was created in 1972 for professional women that needed stylish, easy to wear work attire. An exciting print works well with the simple, figure flattering shape.





1 Begin by drawing your body frame. This is a very simple pose, so keep the lines straight with a small curve for the body.



2 Build up the body, using your cylinder and ball shapes.



3 Over the top of the body shape, following your frame, place your dress outline. Add a simple pair of sandals to complement the dress.



4 Time for the hairstyle and facial features. A fashionable low side-bun works well with this dress —by keeping the hair away from the neck, you can really show the shape of the neckline and collar. Add a knotted belt and show the creases in the dress where the belt will pull in the fabric.



5 Now is the time to add the impression of the dress. Straight lines scattered all over the dress will work best. Don't forget to add a different print to your holdall.



Add an Accessory

**With this outfit we have chosen just one accessory
—a big bold statement purse with a contrasting
print.**



6 Begin inking your pencil when you are happy with your finished drawing. Use thicker lines around the dress, under the belt, and around the holdall and sandals. Also use a thicker line on the inside of the bun to make the hairstyle work as a feature. Keep the lines in the print light and thin.



7 Time to add the color to your ink. A sky blue works well with an exciting white print. Use a darker blue for the sandals, as these will be accentuated by the darker shadows in the dress. Finish off by coloring the holdall black with a white print.



Stylist's tip

When creating a printed fabric, use a darker shade of color in the shadow so you do not lose the body shape in a busy print.

Yves Saint Laurent

YSL created the famous “Le Smoking” tuxedo suit for women in 1966. He pioneered the androgynous style for women. This beautifully tailored tuxedo is given a feminine touch with fuchsia pink accessories.

TAILORING





1 Use lines to create the body frame. For this model we are using a classic catwalk pose.



2 Build your frame using your basic shapes. Put the back leg behind the body to balance the bent elbow on the arm above.



3 Now draw the outfit onto your body frame. Flare the jacket out behind the hand on the hip to show the tailored shape. Add the stiletto shoes to give the model height, which will also make the pants look longer.



4 Remove the frame and add the facial features and hairstyle. To keep the look soft and feminine, a loose relaxed hairstyle is used.



5 Make sure you are really happy with your pencil line before going to ink. Check that your facial features and hairstyle are soft enough to balance out the masculine styling of the suit.



Add an Accessory

Now it's time to add the accessories. Put a short feature neck tie around the model's neck, along with a flower on the jacket lapel. A matching dress ring adds a feminine touch.



6 Use your finished pencil to start working up your ink. Add the thicker lines around the opening of the jacket and down the top of the trouser legs. Thicker lines used around the neck tie and flower will really make them stand out as features.



Stylist's tip

When inking the lines of your flower, take inspiration from nature. Look at images of real flowers, as well as fabric corsages, to help get the detail right.



7 Use dark blue on the suit, highlighted with a sky blue shirt. Contrast with a fuchsia pink tie and belt to really make this outfit stand out. Add complementary makeup to the model's face and finish off with light blond hair.

Alexander McQueen

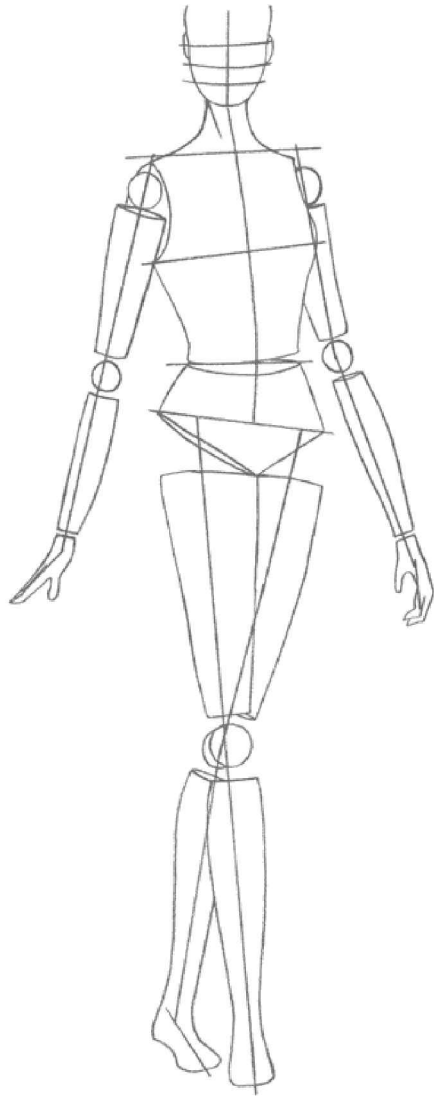
Sarah Burton designed this wedding dress and worked with the Royal School of Needlework to create an elegant, timeless, and stunning piece. It's perfect for a princess and every girl's dream wedding day.

COUTURE





1 Pencil in your pose. A simple elegant but girly pose works well with this statement dress. Keep the arms and legs at soft angles.



2 Draw in your basic shapes over the body frame.



3 Now add the dress shape. Follow the body shape to draw the sweetheart neck line and the lace V-neck. To create fullness in the skirt draw soft curves from the waist through to the hem.



4 For the model's hairstyle a gentle wave works well, which will sit smoothly behind the shoulders. Add the facial features, keeping the face looking straight forward to give the model an elegant feel.



5 Draw in your lace detail using a light pencil. Start a little heavier at the top, then lighter and less consistent down through the skirt. Draw in the veil by following the lines of the arms. Top off with a delicate tiara and matching earrings.

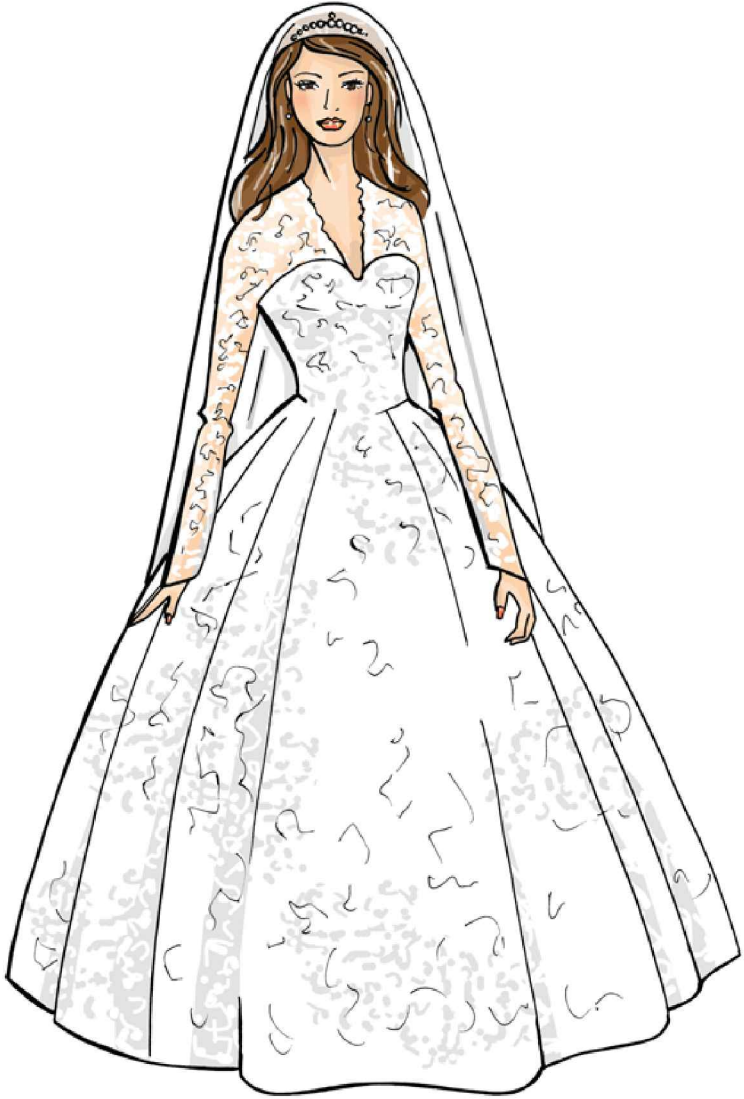


6 Start working up your pencil with ink. Use a light, thin pen for the lace detail throughout the dress. Add heavier lines to the base of the dress, arms, and around the waist. Also, add thicker lines through the hair to help it stand out against the veil.



Stylist's tip

Look at different types of lace so you can see the different effects it has over other fabrics and against your own skin.



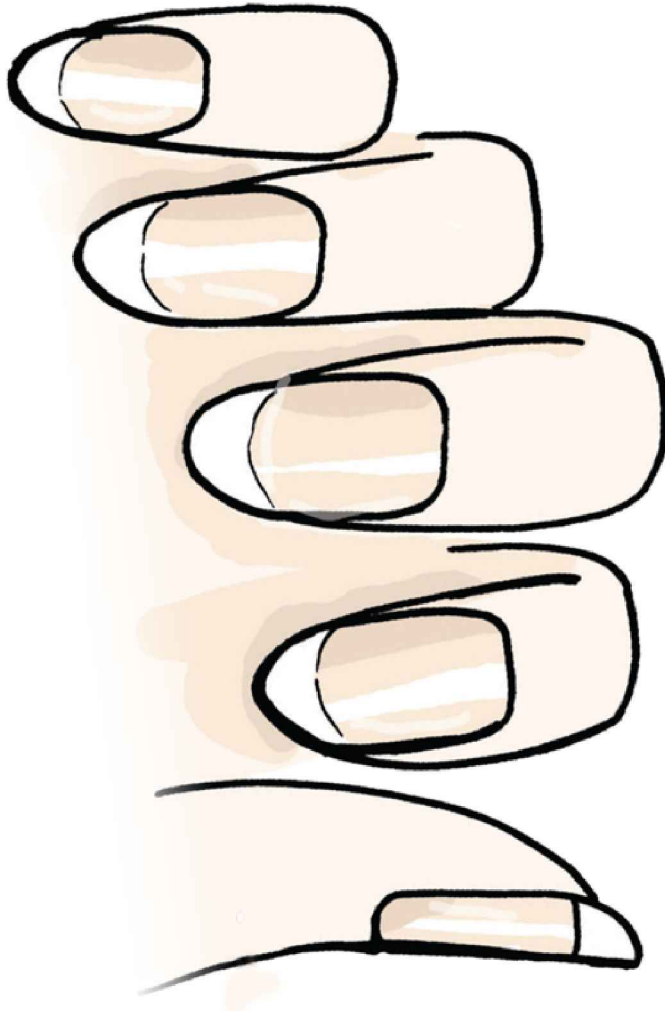
7 White is the color used throughout this stunning dress. Use touches of gray to show shades of the lace detail. For the lace on the arms, use white in various places so the skin color shows through. This will make the lace look light and fresh against the skin.

STYLE CARDS

Classic, simple, fun, or just plain eccentric—fashion designers are ‘out there’ and we love them for it. With their wonderful range of fashion accessories Chanel, Dior, Gucci, and Prada have proved that they can stand the test of time. They also know how to make you feel truly special.



Prada sunglasses for scorching summer days.



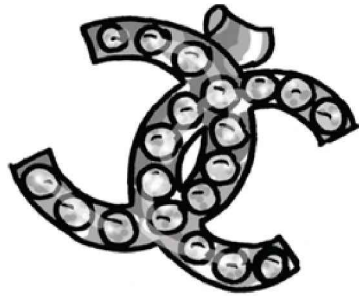
French nail polish is sophisticated and elegant.

CHANEL:

Coco Chanel was probably one of the most iconic designers. Mixing elegance, sophistication, and originality, her style is timeless and still influencing the catwalk.



Made famous by Marilyn Monroe, this perfume is a must have on any girl's dressing table.



Unmistakable Chanel logo diamond studded earrings.



Quilted purse, perfect for dressing up an outfit.



These simple black and white pumps are enhanced by the Chanel use of quilting.

SHOES:

You can't finish off a designer outfit without designer shoes. There are lots out there to choose from. Here are a couple of dazzling pairs.



Blue satin Manolos finish off a classy outfit beautifully.



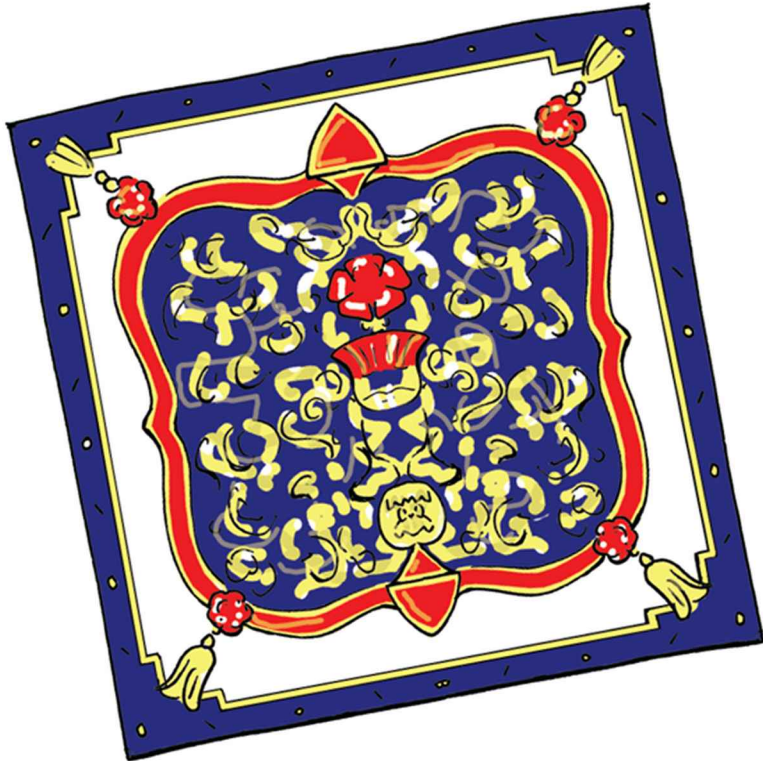
Step out in these gold Jimmy Choo heels.

SCARFS:

Scarfs are a cheap and easy way to add the designer look to any outfit.



McQueen's iconic skull scarf.



Wear an Aspinal scarf for a classic look.

PURSES:

One of the key designer accessories is the purse. It can be simple and subtle or decorated with designer logos.



This striking Hermès purse is ideal for everyday use.



The classic Jackie O iconic Gucci purse.

